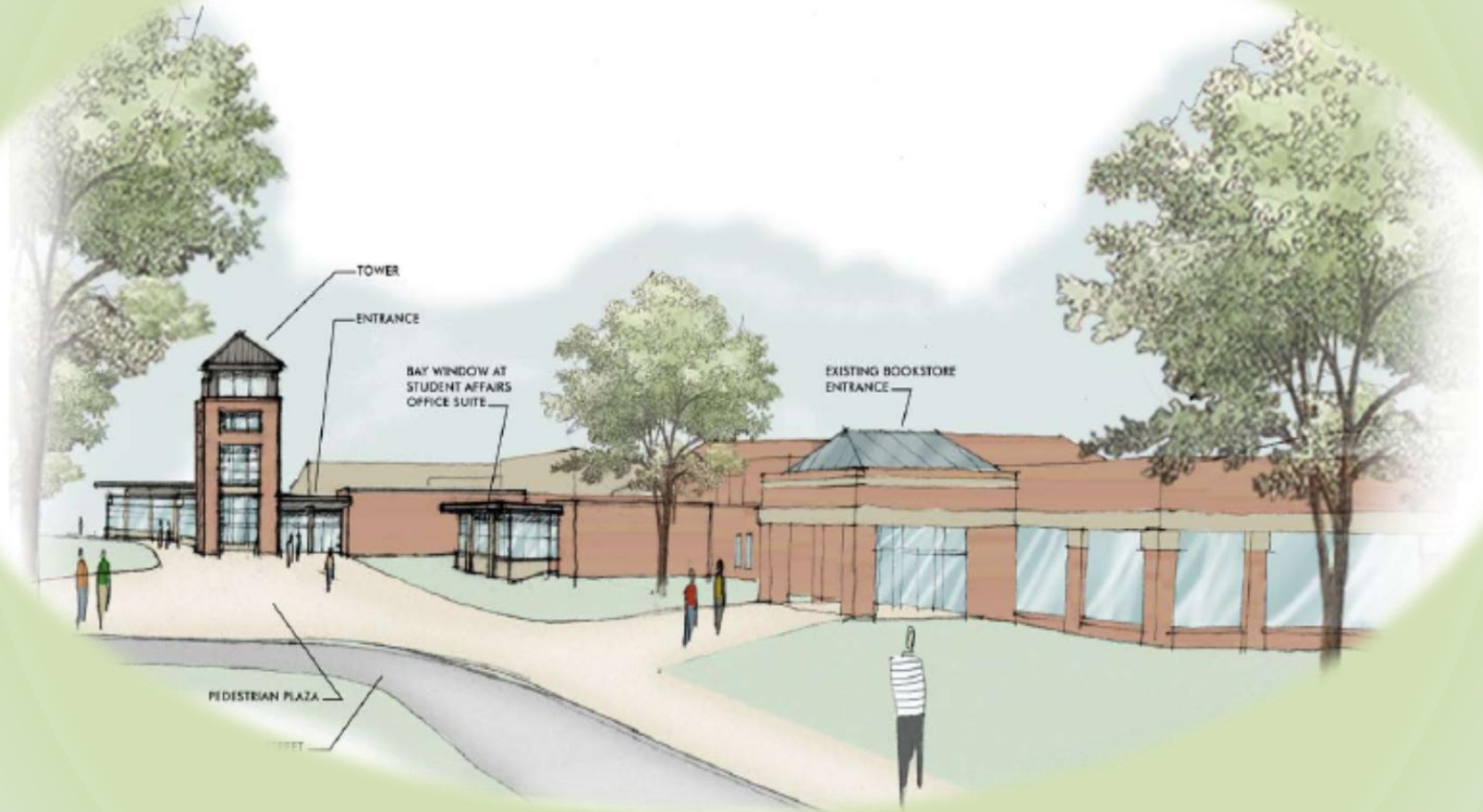


Millersville University



SMC/SSEC

Design & Capital Construction Update

∂ WTW Architects

∂ EI Associates

∂ Raudenbush Engineers Inc.

∂ Pennoni Associates Inc.

∂ Erdman Anthony

∂ Gilbane Building Company

∂ Hospitality Services Inc.

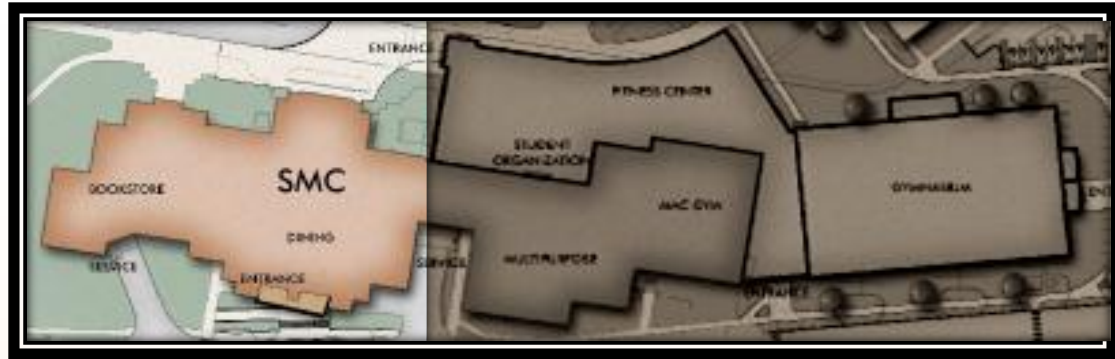
Site Plan



SMC/SSEC

1st Level

Floor plan





SMC/SSEC

1st Level

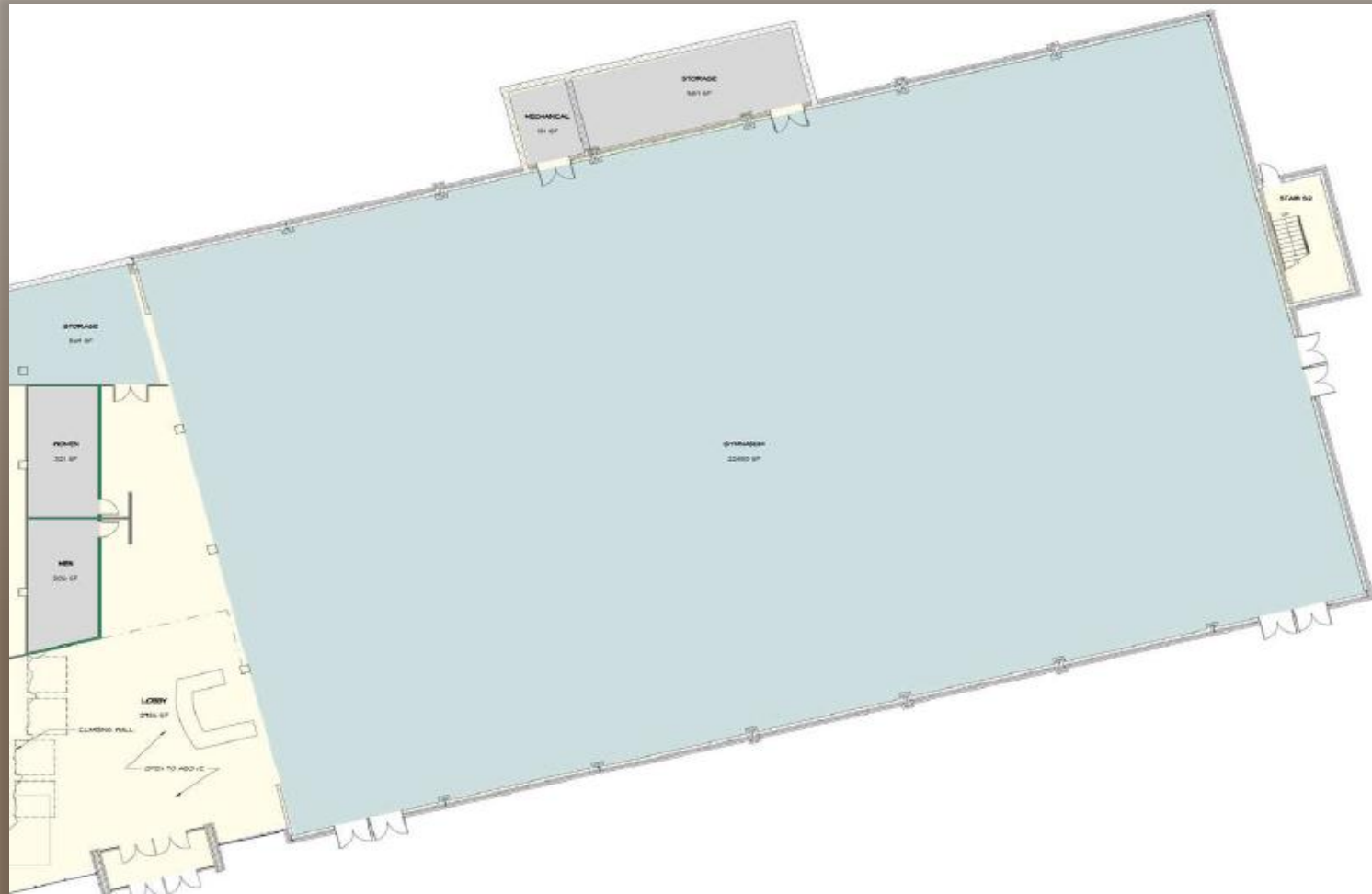
Floor plan



SMC/SSEC

1st Level

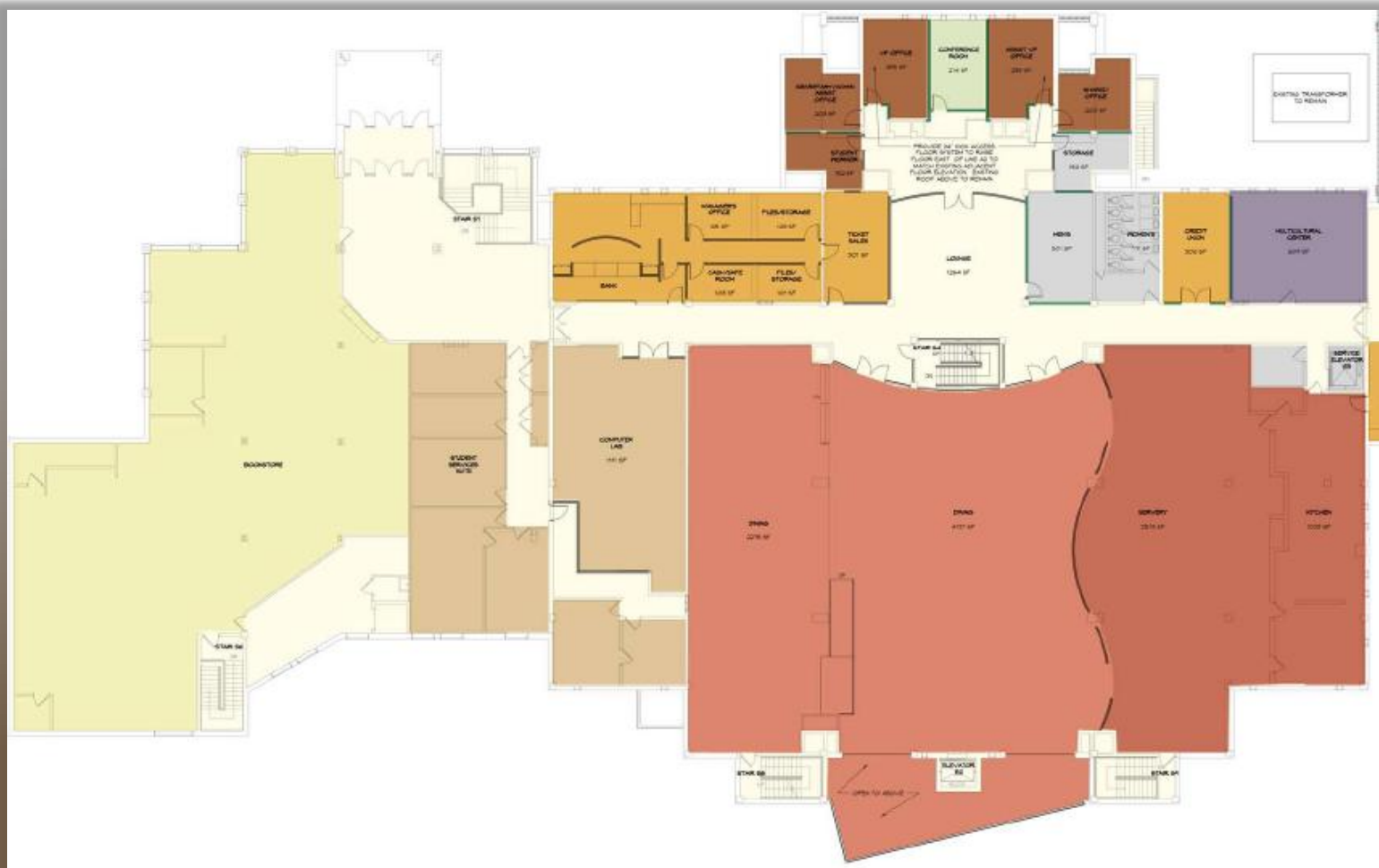
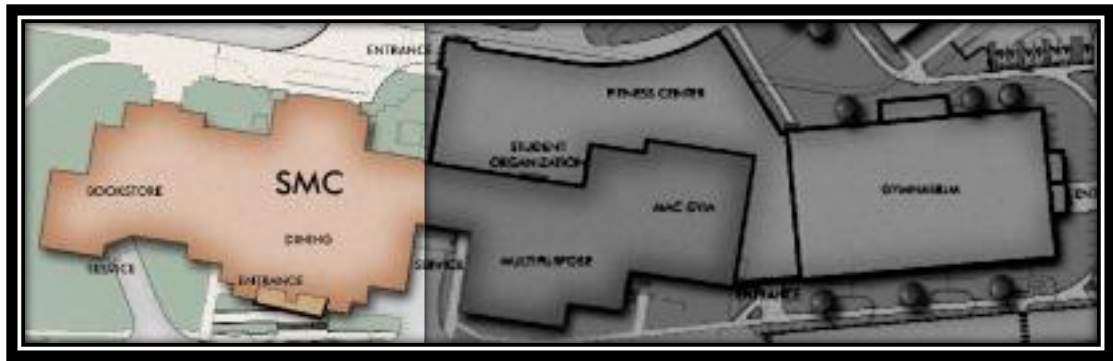
Floor plan



SMC/SSEC

2nd Level

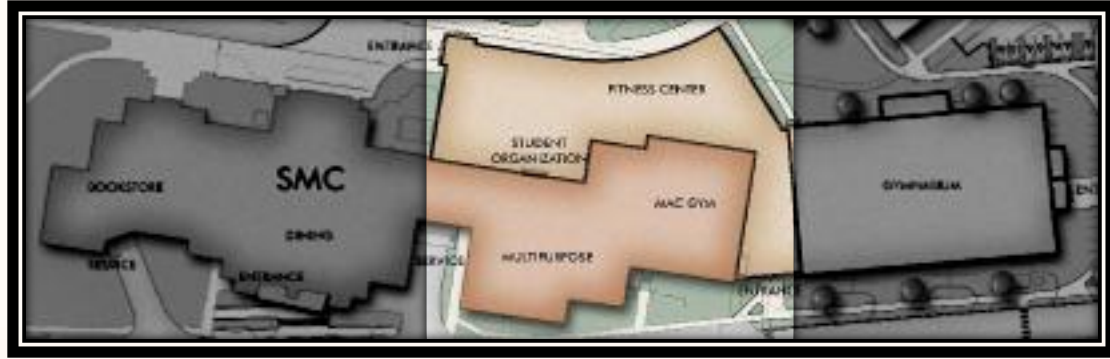
Floor plan



SMC/SSEC

2nd Level

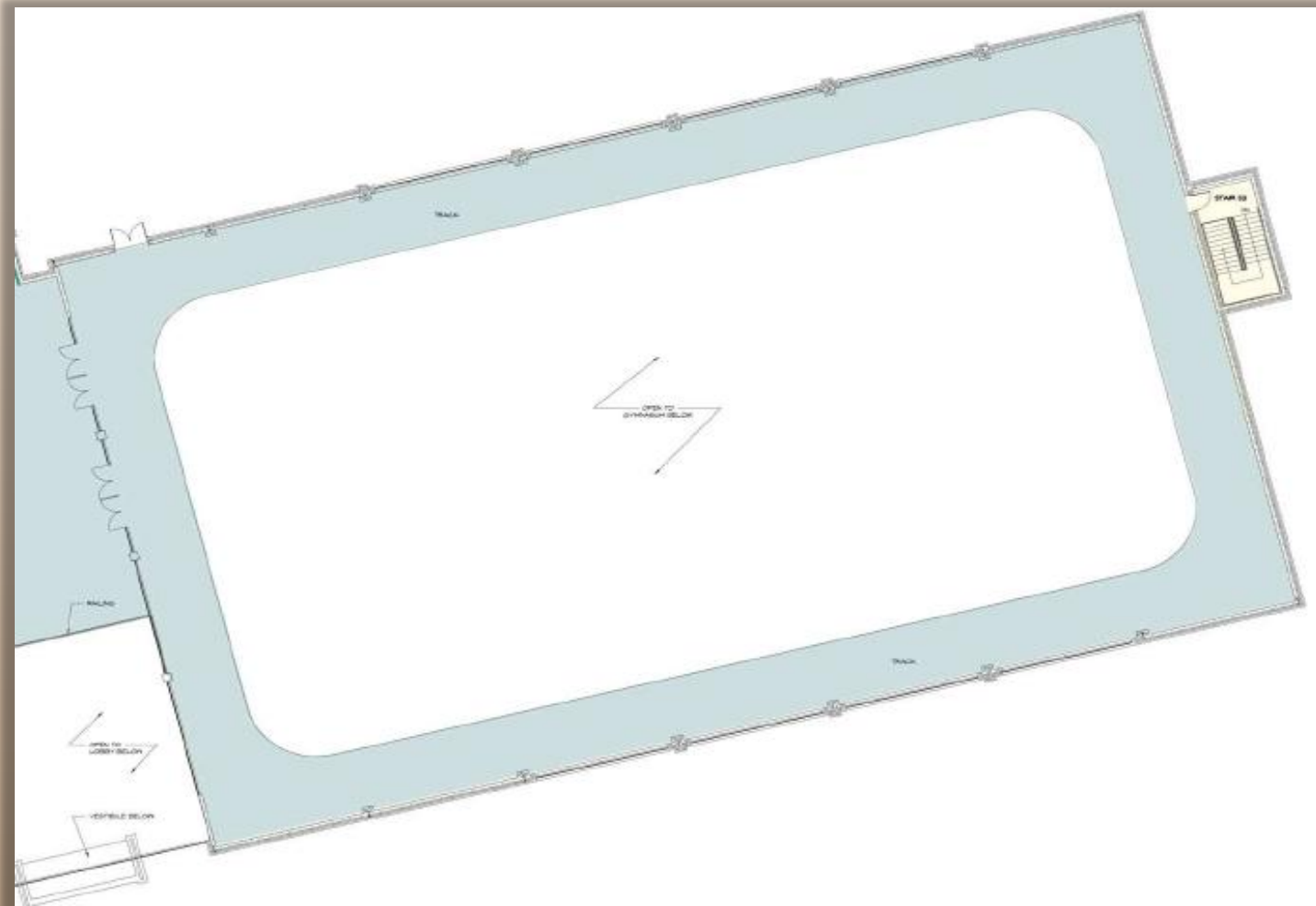
Floor plan



SMC/SSEC

2nd Level

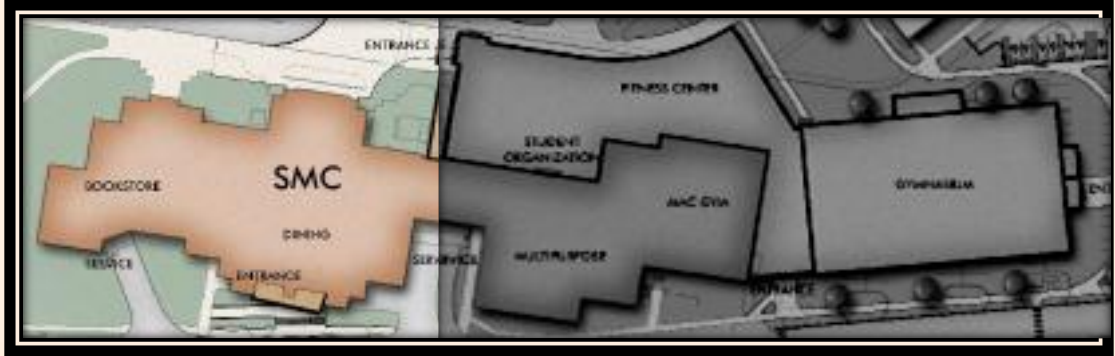
Floor plan



SMC/SSEC

Upper Level

Floor plan





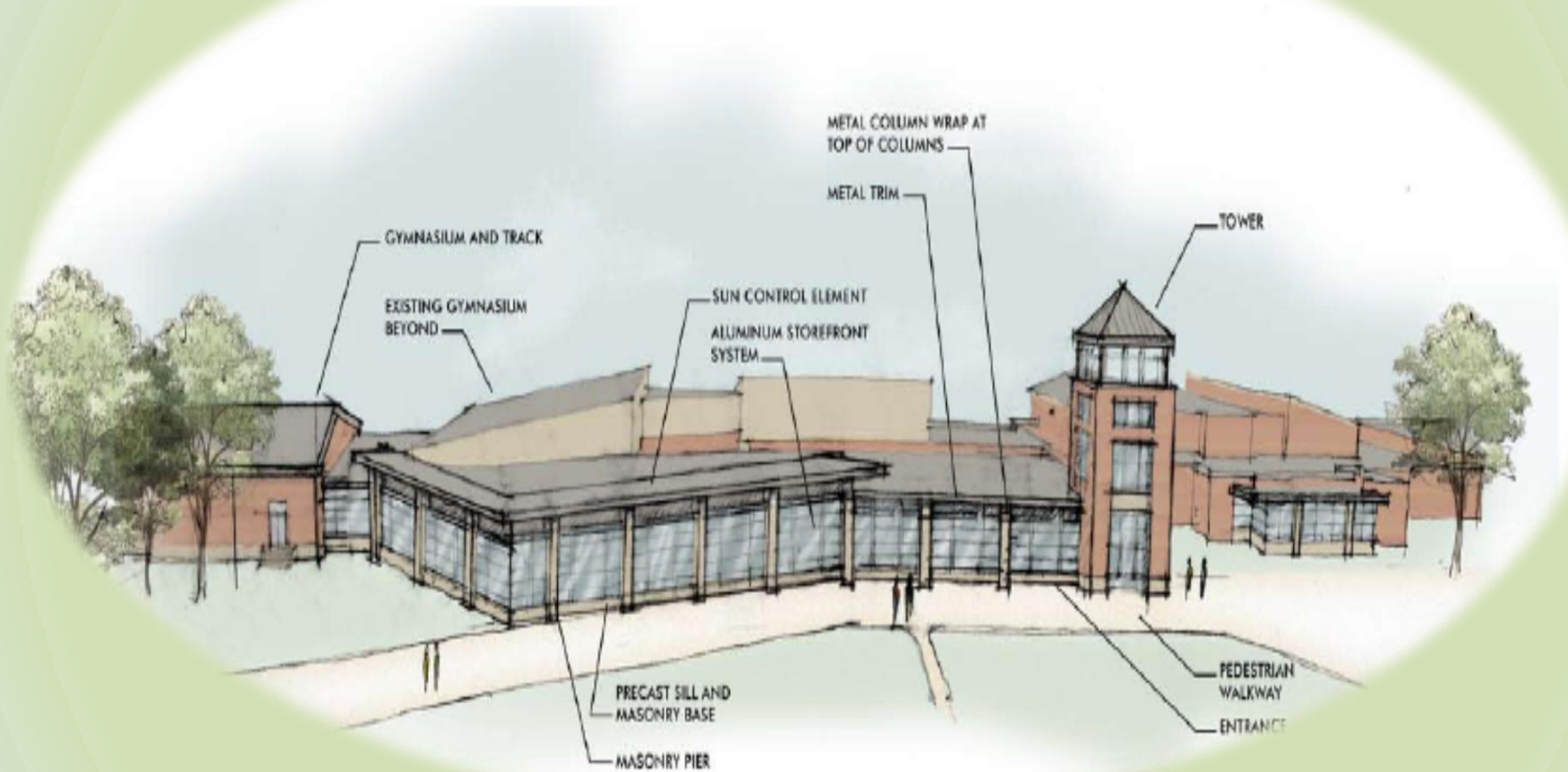
George Street
Aerial View



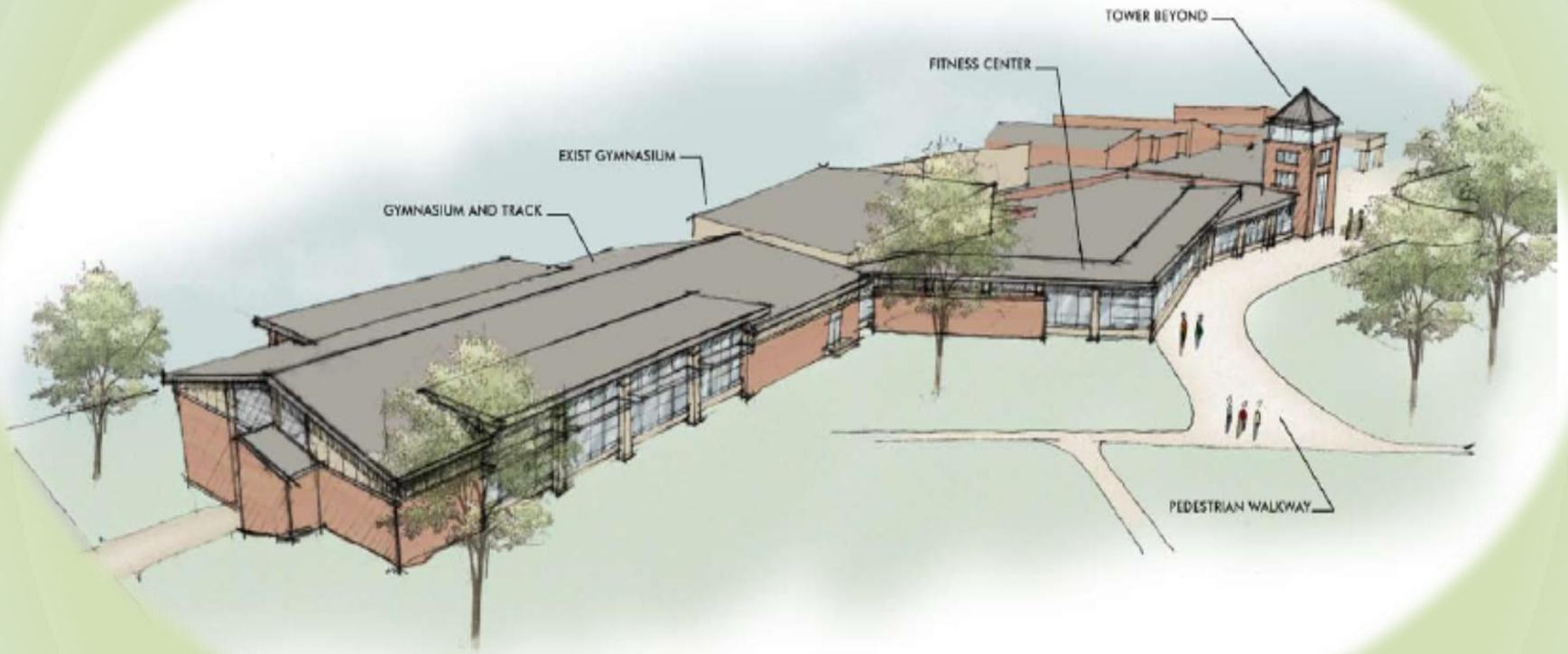
Old Main



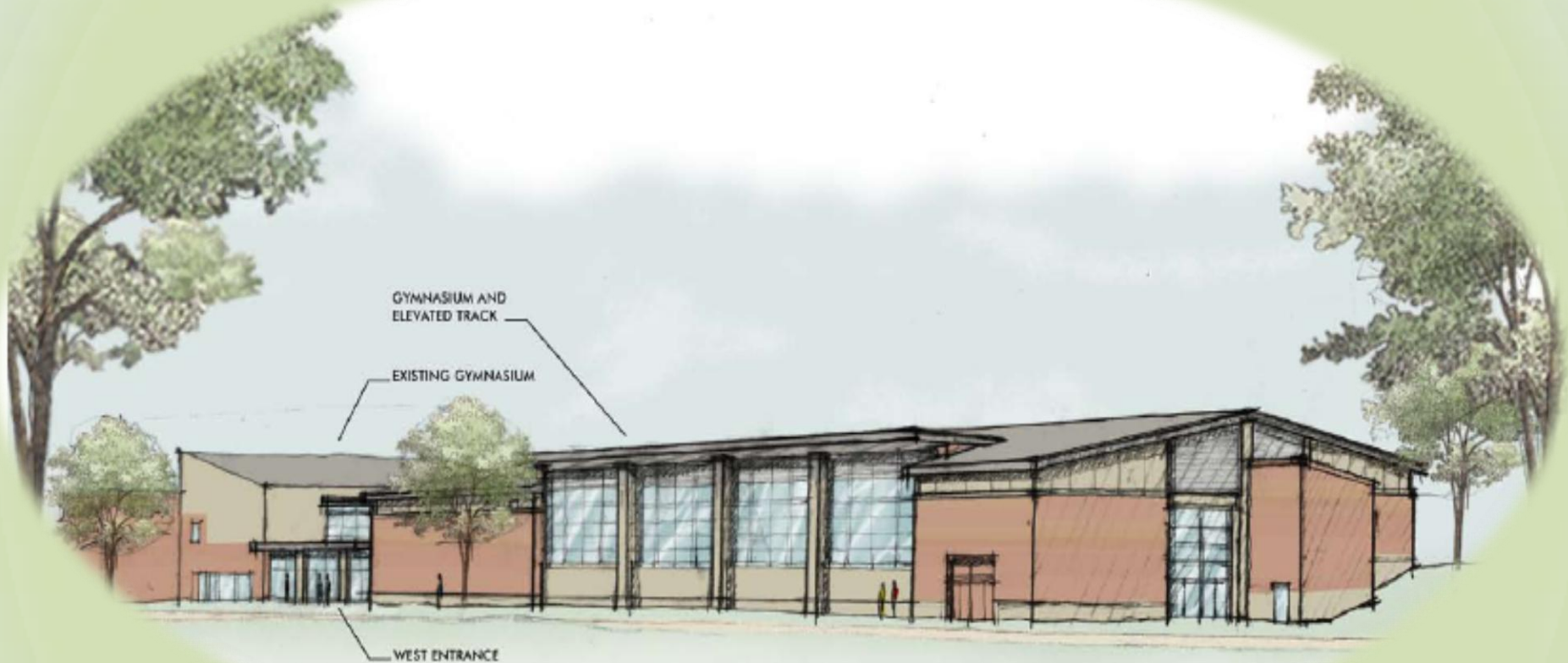
George Street View



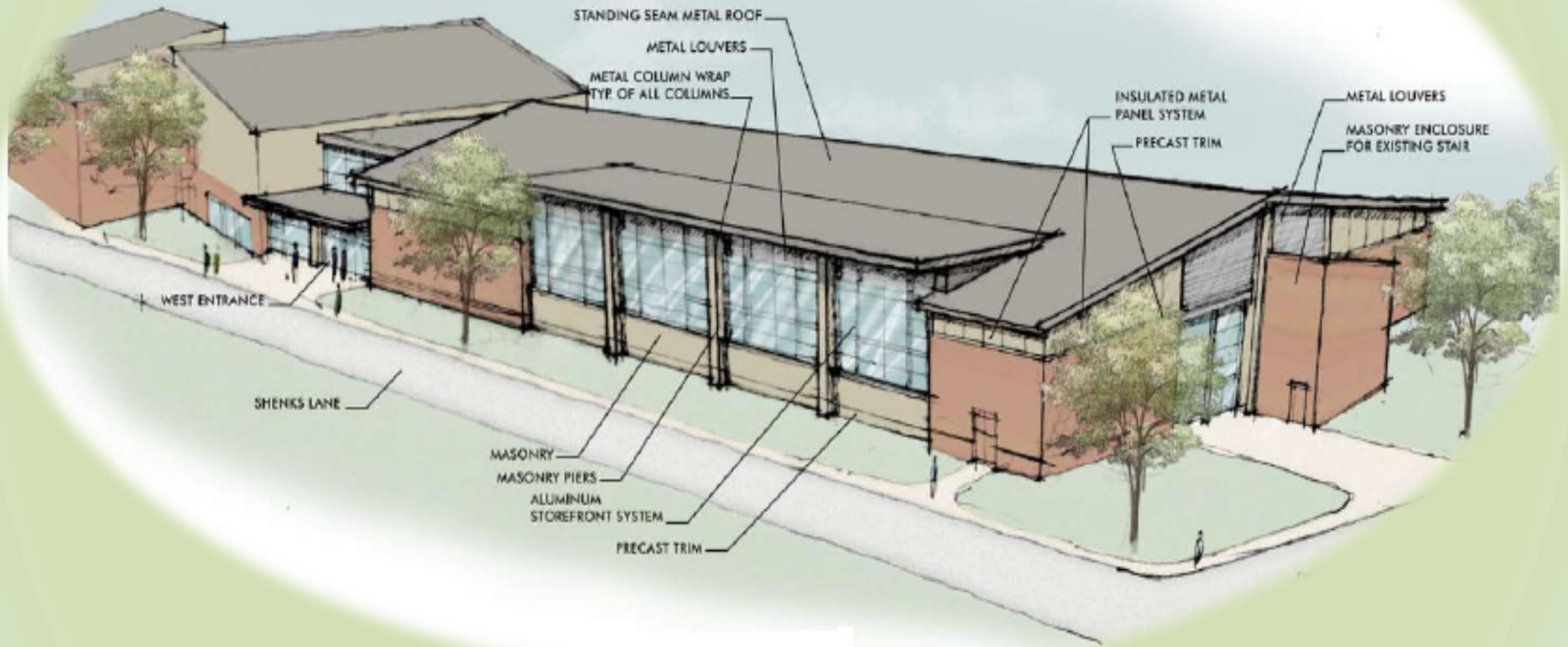
Gordinier View



Resident Quad View



Shenk's Lane



Shenk's Lane
Aerial View



West SMC Entrance



West Gym Entrance

SMC/SSEC Project Budget

Planning Phase

Anticipated Construction and Other Expenditures

Construction Costs	\$30,088,377
Professionals Services	3,538,457
Agency Approvals, Permits & Misc. Costs	941,591
Borough Required Upgrades	<u>75,000</u>
Total Cost	\$34,643,416

Questions?