

Adjusting the color of an image to correct brightness and color imperfections.

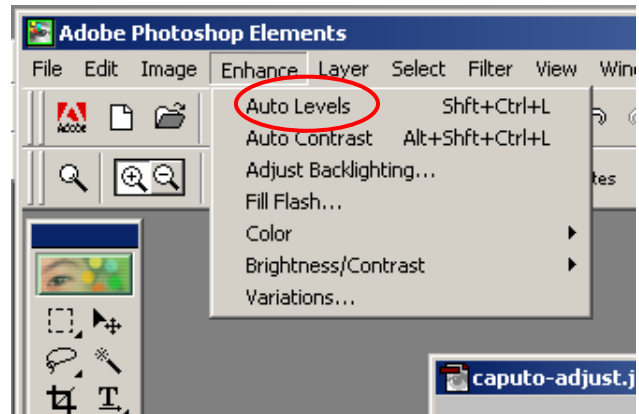
1 Steps

This Step-by-Step explains the procedures adjusting the color of an image that has been taken by a digital camera or has been scanned and then opened into the Photoshop Elements application.

This Step-by-Step assumes that the user has knowledge of opening a file in Photoshop Elements (Elements) and already has the image open in Elements.

- 1) With the image you want to adjust open, select **Enhance** then **Auto Levels** from the drop down menu at the top of the Elements menu bar.

Elements will automatically adjust the levels of red, green, and blue pixels that make up the image.



Notice the increase in color range between the before and after image.

Before

After

