

Adding images to a Web Page using Dreamweaver MX 2004 4 Steps

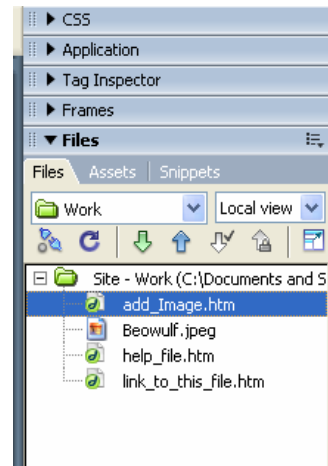
This Step-by-Step explains the procedures for adding images to a Macromedia Dreamweaver 8 Document.

1) Once Dreamweaver 8 is open and a saved HTML file is open, open your site file list by going to **Window...Files**. If a check mark appears next to Files, then your list is already present on your screen. You will typically find this list of files on the right hand side.

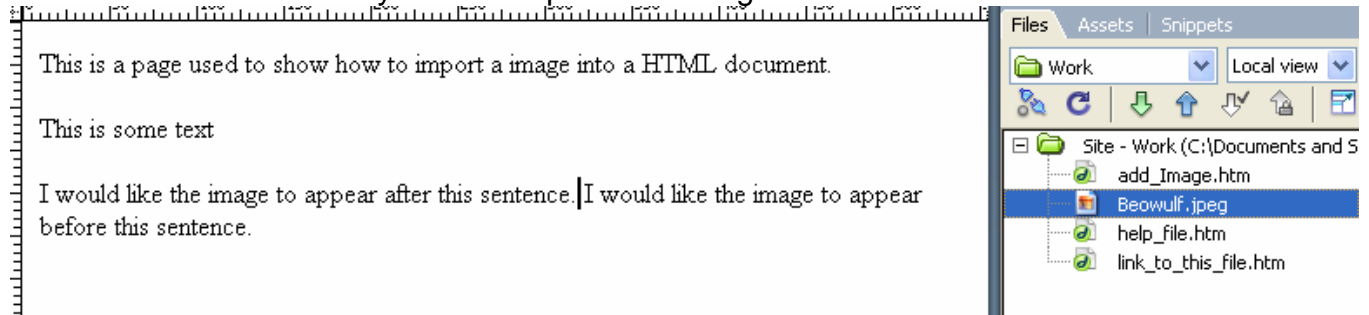
similar

Window		Help	
✓ Insert		Ctrl+F2	
✓ Properties		Ctrl+F3	
<hr/>			
CSS Styles		Shift+F11	
Layers		F2	
Behaviors		Shift+F4	
<hr/>			
Databases		Ctrl+Shift+F10	
Bindings		Ctrl+F10	
Server Behaviors		Ctrl+F9	
Components		Ctrl+F7	
<hr/>			
Files		F8	
Assets		F11	
Snippets		Shift+F9	
<hr/>			
Tag Inspector		F8	

results in something to

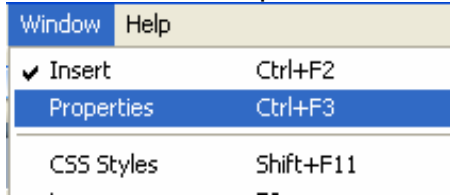


2) From this Files list, click on the image without releasing the mouse button. Then drag the mouse to the location you wish to place the image.



Once the image is at the location you wish to place it, release the mouse button.

3) After inserting the image, go to the Properties window, located at the bottom of the screen. If the Properties window is not present, go to **Window** and select **Properties**.



4) Select the image. From the Properties window, put a 0 (zero) into the Border text box, as indicated in the below image.

