

# Instructor **step** by **step**

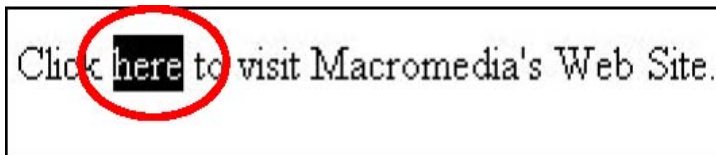
## Adding a Link to a Web Page using Dreamweaver MX 2004

3  
Steps

**Prerequisite Knowledge:** This document assumes you already know how to insert text to a Dreamweaver document.

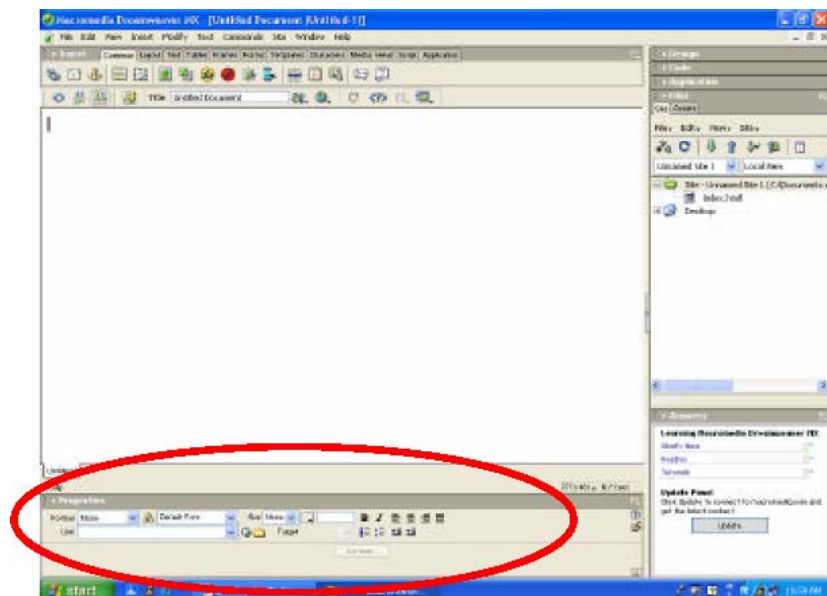
This Step-by-Step explains the procedures for adding a hyperlink to a Dreamweaver Document.

1) **Highlight** the word or words in the text that will be converted into a link.

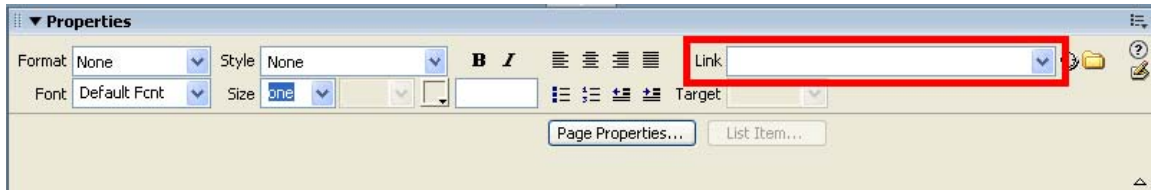


To make a web link:

2) By default, the **Properties** window should open on the desktop when the Dreamweaver application is launched. If the **Properties** window is not opened, click on the **Window** tab on the menu bar, then scroll to **Properties**.



- 3) In the Properties window, enter the **URL** (web address) into the text box labeled **Link**. After inserting the URL, press **Enter** on the keyboard. The word or words that were highlighted are now links to the URL that was inserted.

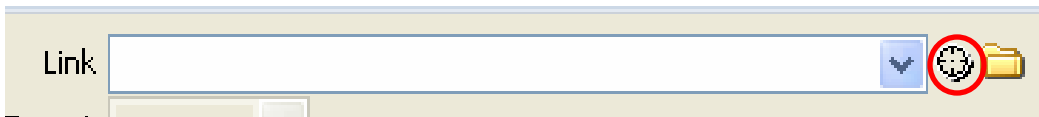


make sure you have the **http://** in front of the link, otherwise it will not work:  
**www.example.com** will not go to **http://www.example.com**

To make a link to a page within your site:

- 2) By default, the **Properties** window should open on the desktop when the Dreamweaver application is launched. If the **Properties** window is not opened, click on the **Window** tab on the menu bar, then scroll to **Properties**.

- 3) In the Properties window, drag the **small circle with a cross** (as pointed out in the image below) over to the file you wish to link to. Dreamweaver will take care of the rest!



The below image shows how the drag feature works:

