

## Adding images to a Web Page using Dreamweaver 8 5 Steps

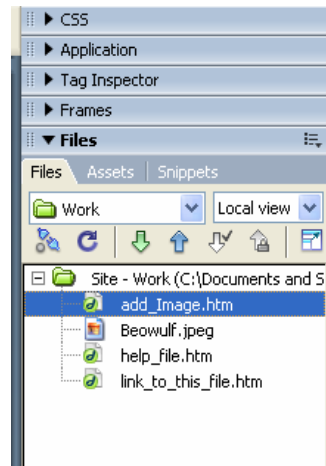
This Step-by-Step explains the procedures for adding images to a Macromedia Dreamweaver 8 Document.

1) Once Dreamweaver 8 is open and a saved HTML file is open, open your site file list by going to **Window...Files**. If a check mark appears next to Files, then your list is already present on your screen. You will typically find this list of files on the right hand side.

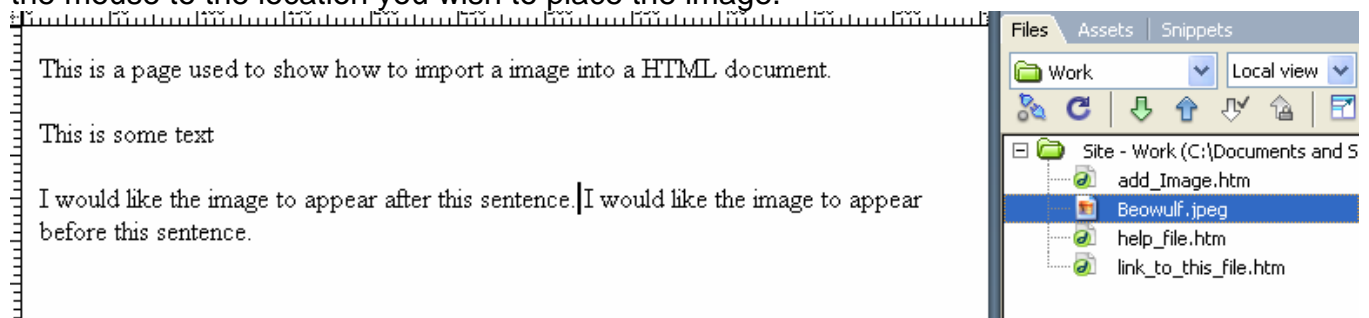
similar

Window	Help
✓ Insert	Ctrl+F2
✓ Properties	Ctrl+F3
CSS Styles	Shift+F11
Layers	F2
Behaviors	Shift+F4
Databases	Ctrl+Shift+F10
Bindings	Ctrl+F10
Server Behaviors	Ctrl+F9
Components	Ctrl+F7
<b>Files</b>	<b>F8</b>
Assets	F11
Snippets	Shift+F9
Tag Inspector	F8

results in something to

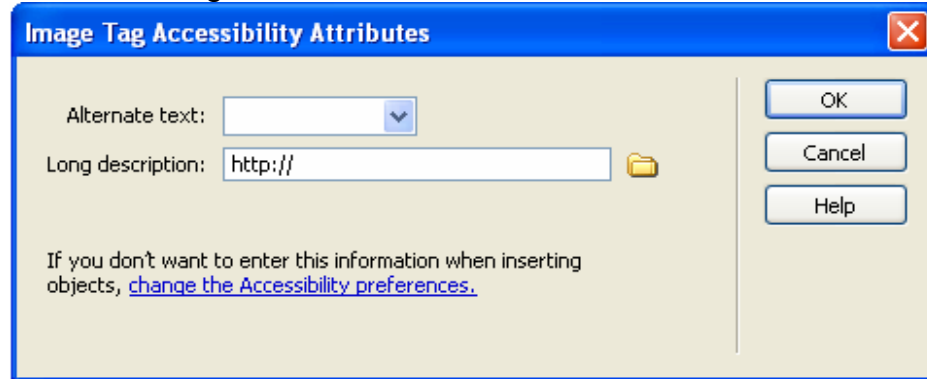


2) From this Files list, click on the image without releasing the mouse button. Then drag the mouse to the location you wish to place the image.

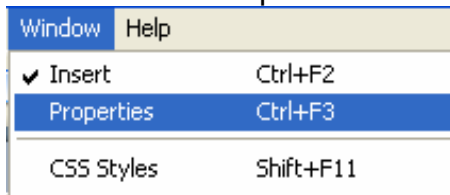


Once the image is at the location you wish to place it, release the mouse button.

3) Fill in the Alternate Text information, should you desire alternate text. Click **OK** after you are done with this dialogue box.



4) After inserting the image, go to the Properties window, located at the bottom of the screen. If the Properties window is not present, go to **Window** and select **Properties**.



5) Select the image. From the Properties window, put a 0 (zero) into the Border text box, as indicated in the below image.

