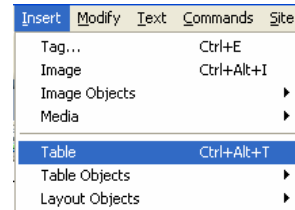


Adding and Modifying Tables using Dreamweaver 8

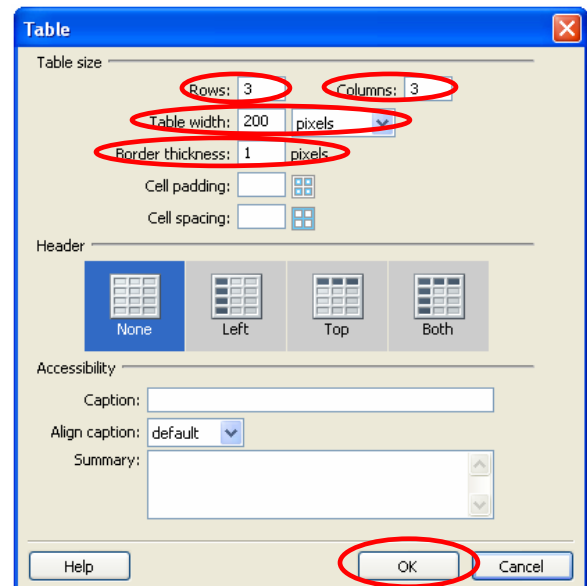
10 Steps

This Step-by-Step explains the procedures for adding a table to a Dreamweaver 8 Document.

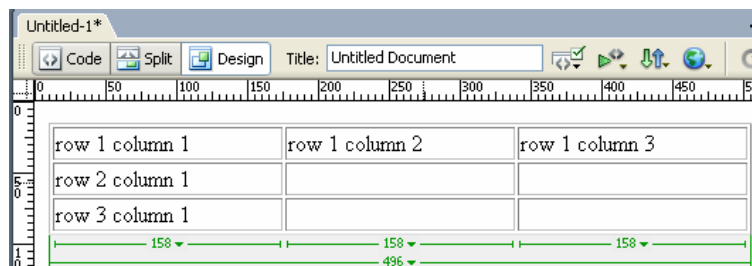
- 1) Choose **Insert** -> **Table** from the top drop-down menu.



- 2) Enter the number of desired **rows** and **columns** in the **Insert Table** window (Rows run left to right. Columns run top to bottom). Also enter the table's **width**, and the width of its **border**. Click **OK** after making the changes.

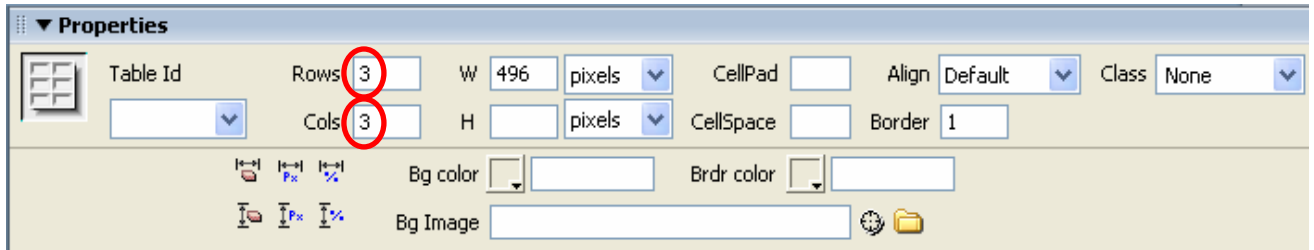


- 3) The table will be placed into your document at the location of your cursor. Text/images/links can be placed in the table's cells. (A Cell is one location inside the table.)

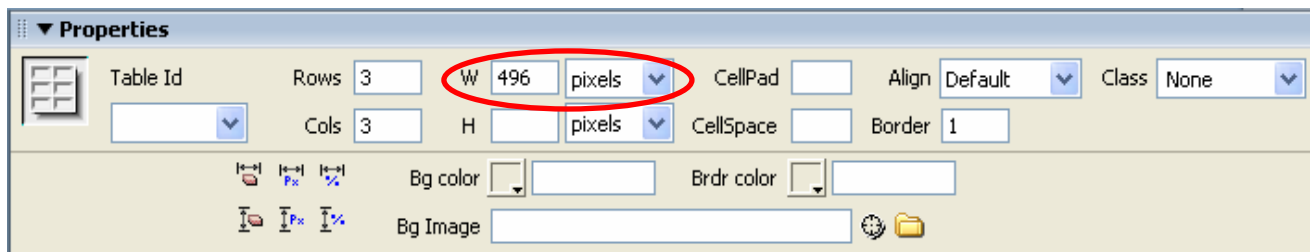


- 4) The table can also be modified in the **Properties** popup window. If your Properties window has been closed, choosing **Window** -> **Properties** from the drop-down menu will reopen it.

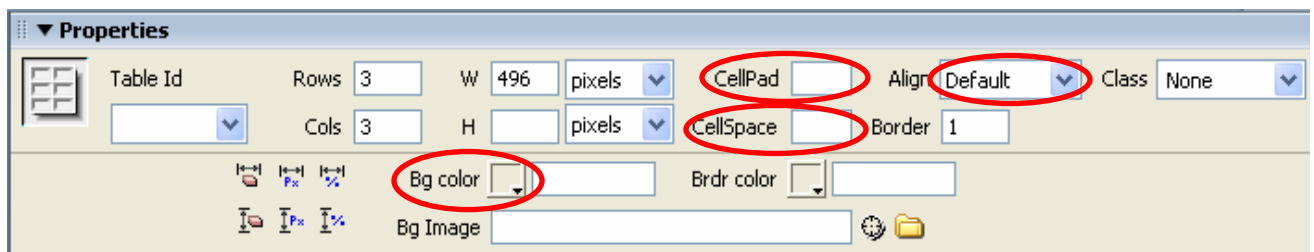
- 5) **Select** the table (click on one of the edges of the table).
- 6) The number of **rows** and **columns** can be adjusted here.



- 7) **Width** can be specified in screen **pixels** or by **percent** of the window's size.



- 8) Some other options include **Background color**, **cell padding**, **cell spacing**, and the **table's alignment**.



- 9) More options are available by **right-clicking** inside a cell. In the Table menu, **Increase Row Span** and **Increase Column Span** can be helpful in aligning elements on your page.

- 10) Also inside the **right-click** menu are **Insert Row/Column** and **Delete Row/Column**.

