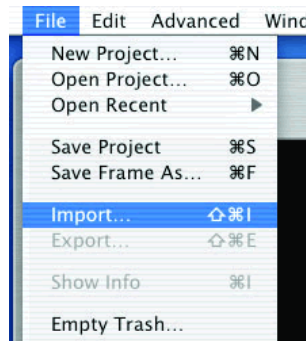


Adding still images into iMovie 8 Steps

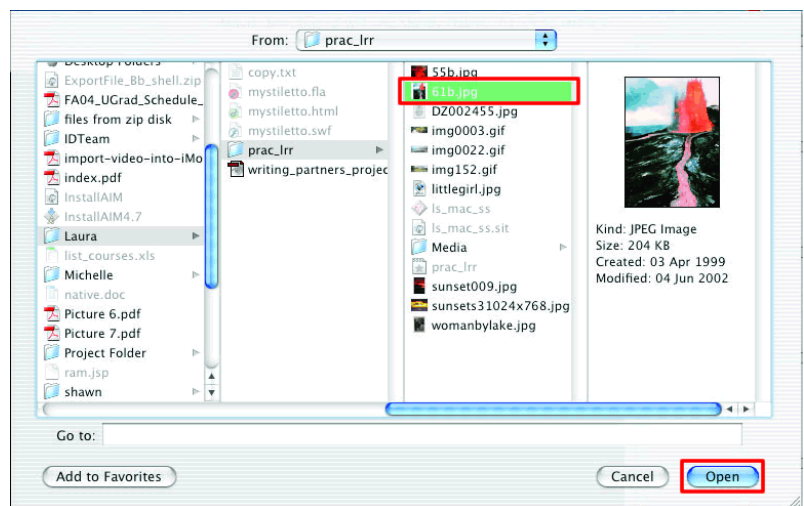
This Step-by-Step explains the procedures for adding still images into an iMovie file.

Prerequisite: This Step-by-Step assumes that a new iMovie file has been created and is open.

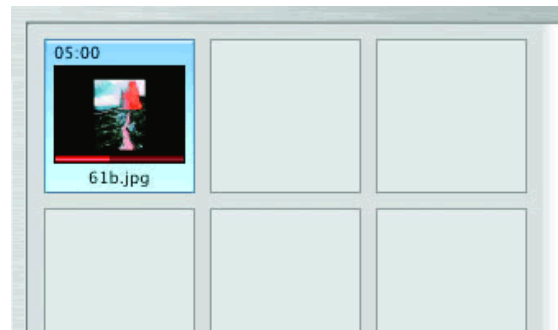
1) From the **File** menu choose **Import**.



2) Next, locate the still image that you want to import. iMovie will recognize many file formats, so try importing your file. If iMovie does not import your image, it might be the file type. Try using Photoshop or Fireworks to convert your image to jpg.



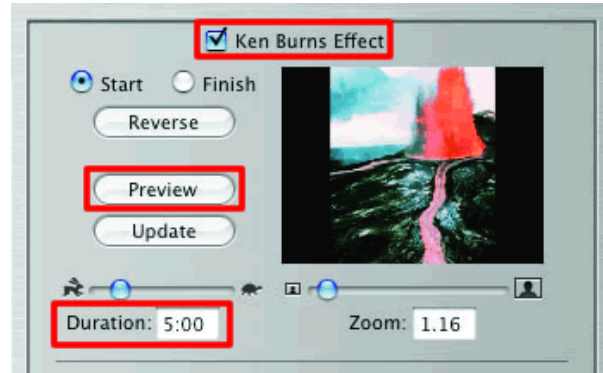
3) iMovie will import your image onto the **shelf**, to the right side of your window. The shelf is temporary storage because any clips or images on the shelf are not in your video. However, items on the shelf can be easily moved into your video.



4) Select the image, then click on the **Photos** button.

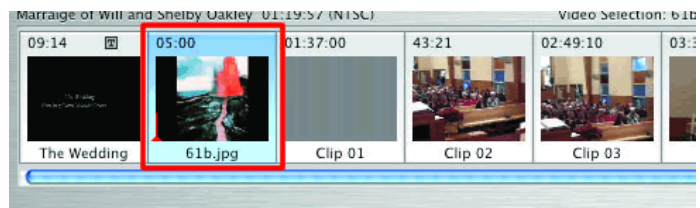


5) The Photos section has several options such as: **Duration** which is how long your photo will be displayed in the movie. **Ken Burns Effect** will slowly zoom in on part of the image. Use Preview to see how your adjustments look.



6) Switch back to the **Clips** button.

7) **Drag** your image from the shelf down onto the **Timeline** at the bottom of the window. This will remove your image from the temporary storage of the shelf and place your image in the movie.



8) Step 7 is as far as you need to go, but there are several more options available to you. With your image **selected in the Timeline**, click the **Effects** button. Here there are many different effects that can be performed on your image. Find one you like and click **Apply**.

