

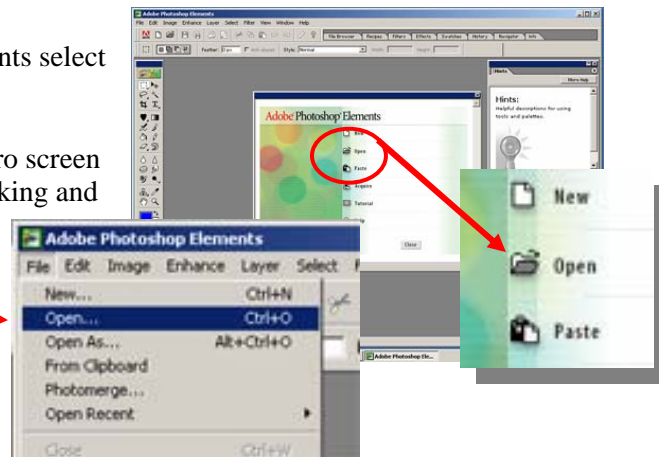
Getting Started with Adobe Photoshop Elements. Opening an existing image, becoming familiar with the Elements Workspace, and Saving.
4 Steps

This Step-by-Step explains the procedures opening the Photoshop Elements application and opening an image that was taken from a digital camera into Photoshop Elements.

This Step-by-Step assumes that the user can locate and open the Photoshop Elements (Elements) application.

- 1) At the start-up screen of Elements select **Open**.

If you have clicked past the intro screen you can also open a file by clicking and holding on File from the top menu until it highlights **Open**, then release the mouse button.

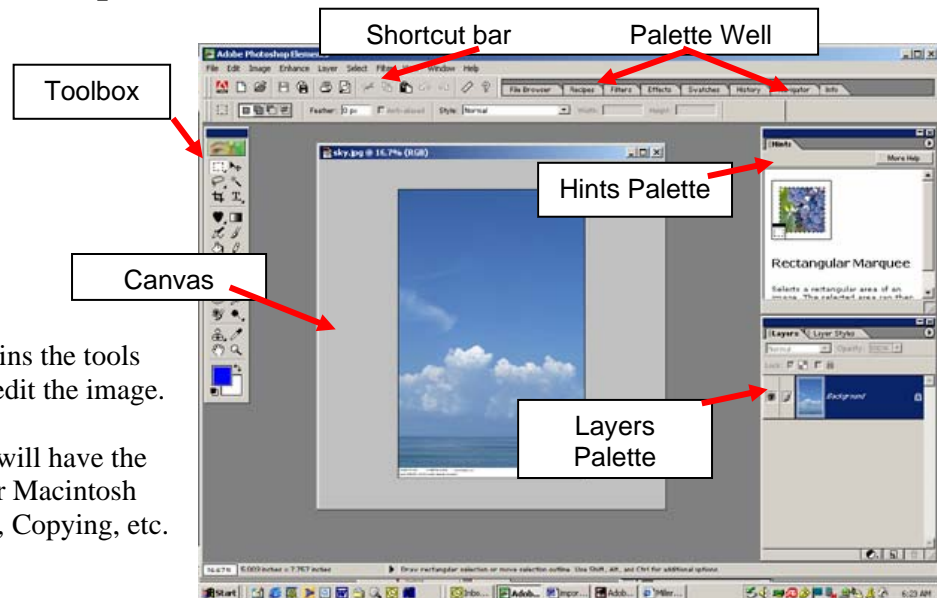


- 2) A file location dialog box will appear which is similar to opening most other Windows or Macintosh files. Using this dialog box, locate the file you would like to work with and double click on it to open the file inside Photoshop Elements. (Step not Shown)

- 3) Now that a file is open let's look at the Elements Workspace.

Move to the next page to see an explanation of the Photoshop Elements Workspace.

The Elements Workspace.



The **Toolbox** contains the tools that will be used to edit the image.

The **Shortcut bar** will have the standard windows or Macintosh shortcuts for Saving, Copying, etc.

The **Palette Well** contains palettes, which are small menus of additional features of a tool from the Toolbox.

The **Canvas** is the area, which can be modified in Elements.

The **Hints Palette** can provide helpful hints while making changes to an image on the canvas.

The **Layers Palette** contains all of the layers that make up the image.

4) Once the file you want to work on is open, make the changes you would like to make and **Save** the file. The **Save** option is available under the **File** dropdown menu. This procedure is the similar to saving a file in any other application.

