

# Millersville University Exchange

Vol XXXI, Number 11  
February 19, 2009

## Bringing Outer Space & Coastal Oceans to Millersville University Classrooms

The NASA Goddard Space Flight Center's Wallops Flight Facility has teamed up with Millersville University professors and students in collaboration with the Marine Science Consortium to give students a hands-on experience in the world of science.

The goal of Wallops Island Flight Facility is to be a "national resource" to facilitate low-cost aerospace-based science and technological studies, and enable scientific discovery. It is important to NASA to build relationships with students, expand students' minds while educating the next generation of scientists. NASA is teaming up with PASSHE faculty to develop research projects that involve undergraduate students in many disciplines: computer science, physics, applied math, marine biology, art, oceanography, geography information systems and more. NASA also encourages students with non-science majors to get involved.

Dr. Julie Ambler, biology, and Dr. Ajoy Kumar, earth sciences, represent Millersville University in the Marine Science Consortium which involves professors from other PASSHE schools and nearby



Dr. Julie Ambler



Dr. Ajoy Kumar

colleges such as York College.

In addition to summer courses in marine science, new general education classes for non-majors will be taught at the Marine Science Consortium in a new blended format with eight weeks online and one week on-site at Wallops Island. These classes will be available in the Millersville University summer 2009 schedule.

The Marine Science Consortium is also renovating a facility they have had for the past 30 years to make it more appealing to the guests and students who use the facility. Phase one of the renovations

is being backed by a \$15 million loan from PASSHE's Board of Governors. The renovations include five new buildings in addition to the already reconstructed cafeteria and learning center where the college classes are taught.

For more information on Wallops Flight Facility's student internships and its partnership with Millersville University, contact Dr. Ajoy Kumar at ext. 2432 or by email at [Ajoy.Kumar@millersville.edu](mailto:Ajoy.Kumar@millersville.edu).

### Arlen Specter Town Meeting



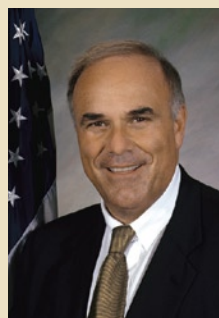
Senator Arlen Specter

U.S. Senator Arlen Specter (R-Pa.) will hold a Town Meeting at Millersville University on Monday, February 23 at 11:45 a.m. in the Student Memorial Center multipurpose room. The senior senator from Pennsylvania

will be speaking on key issues and will then hold a question and answer session. The campus community and public are invited.

### Tuition Relief Plan Press Conference

The governor's proposed "tuition relief plan" will be the subject of a press conference at Millersville University on February 26 at noon. Pennsylvania Governor, Ed Rendell, will be joined by the Chancellor of the Pennsylvania



Governor Ed Rendell

State System of Higher Education (PASSHE), Dr. John C. Cavanaugh, as well as members of the Council of Trustees and Millersville President Francine G. McNairy.

The tuition assistance program is for undergraduate, resident students who meet specific income guidelines and are enrolled at any of the 14 community colleges in Pennsylvania or one of the 14 PASSHE universities. In most cases, students whose families earn less than \$100,000 would qualify. The plan would be paid for by legalizing video poker.

## Upcoming Events

### February

- 20 & 21 The Vagina Monologues, 7:30 p.m., Lyte Auditorium, Alumni Hall.  
22 Concert Band/Wind Ensemble Concert, 2:30 p.m., Lyte Auditorium, Alumni Hall

- 23 Orchestra Concert, 8 p.m., Lyte Auditorium, Alumni Hall.  
26 Film: Shaft, 7:00 p.m., Myers Auditorium, McComsey Hall  
28 Spring Break Begins

### March

- 7 Regional competition of Odyssey of the Mind, 8 a.m., Student

- 12 Memorial Center Multipurpose Room, Stayer, Lyte Auditorium, Ganser Library. More information at [www.odysseyofthemind.com](http://www.odysseyofthemind.com)  
Film: Malcolm X, 7 p.m., Myers Auditorium, McComsey Hall  
12-14 All Campus Musical, "Into the Woods," 8 p.m., Lyte Auditorium, Alumni Hall.

*continued on pg. 2*

## Staff Activities

**Dr. Cheryl Desmond**, educational foundations, had three biographical articles on Rachel Carson, Theodore Sizer and Simone Weil published in the "Encyclopedia of the Social and Cultural Foundations of Education," November 2008.

**Dr. Bill Dorman**, communication and theatre, is on sabbatical working in creative services at WGAL-TV, learning about station promotion and advertising. In addition, his term as national president of the National Broadcasting Society (NBS) ends in March at the NBS national convention in New York City. The Millersville chapter has close to 30 students going to the convention. During the convention, Dorman will moderate a panel of four Millersville University alumni who work in New York about the challenges of a career in the Big Apple. The alums are Andrea Sabia, Mathias Sundburg, Vance Spicer and Heath Hoffmeister.

**Dr. M.P.A. Sheaffer**, English, was a participant in the "Hope and Change: Poetry at the Players" program at the Players' Club in New York on January 22. She sang as

an alto ringer for three performances with the Chorvereinigung St. Augustin at the Jesuitenkirche in Vienna, Austria: Mozart's Piccolomini- Messe on January 1; Haydn's Kleine Orgelsolo-Messe on January 4; and Mozart's Kronungsmesse on January 6. She also performed with the Festival Chorus of the Archdiocese of New York in two concerts of Saint-Saens' "Christmas Oratorio" on January 11 at St. Joseph's Seminary in Yonkers, N.Y.

## Obituary

Charlotte Chalfant Voris, 87, died December 31, 2008, in Connecticut. She lived for over 30 years in Millersville and was the director of housekeeping at Millersville University, retiring in 1989.

## Events *continued from pg. 1*

### March

- 13, 14 2009 CCERP Policy Conference, 8 a.m., Lehr Room, Gordinier Hall "Sustaining an American Middle Class in a Global Economy."  
 15 All Campus Musical, "Into the Woods," 2 p.m., Lyte Auditorium, Alumni Hall.  
 16 Exhibit: Greg Kline, Sculptor Ganser Gallery, Ganser Library.

## Weather Center Open House

Millersville's Weather Center is having its ninth annual open house on Tuesday, February 24.

Those attending will be able to experience the state-of-the-art weather center, which includes a new electronic map wall, big-screen visualizations and a streaming video production area. At the open house, guests will be able to meet Weather Information Center director Eric Horst and student meteorologists, see videos of daily weather, long-range outlooks and research. Posters of student-faculty research will also be displayed, including the analysis of the localized heavy snow event of February 3, 2009.

The open house will be from 6 p.m. until 8 p.m. in Caputo Hall room 401. Refreshments will be served.

See the Millersville University Weather Center website for more details at [www.atmos.millersville.edu/~wic/html/contact.htm](http://www.atmos.millersville.edu/~wic/html/contact.htm).

## Correction:

In the February 5 Exchange the date on the photo for employees who served 30 years or more should have read December 4, 2008.

The Exchange is published for employees of Millersville University of Pennsylvania on the first and third Thursdays of the month. Send news to the Office of University Communications & Marketing, Duncan Alumni House; email: [janet.kacskos@millersville.edu](mailto:janet.kacskos@millersville.edu) or call ext. 3586. Editor: Janet Kacskos; Graphic Designer: Diane Black '82. Student Writers: Jenna Gerstenblith and Lauren Thompson.

Current and past issues of the Exchange are available online at [www.millersville.edu/~ucm/](http://www.millersville.edu/~ucm/).

**Millersville University**  
SEIZE THE OPPORTUNITY

Millersville University is an Equal Opportunity/  
Affirmative Action Institution.  
A member of Pennsylvania's State System of Higher Education



Printed on recyclable paper.

2863n-0109

## Congratulations to

Brant Schuller, art, and Kristen Lefever, on the birth of their daughter, Sofia Brynn Schuller on January 13.

Wendy Sheaffer, University Communications & Marketing, and her husband, Mike on the birth of their son, Mason Drew, on February 1.

## New Employees April 2008



Front Row: Pat Coulson, Lucy Santana, Gail Bower-Geist, Carol Landry, Nereida Velez-Forgave, Chris Tomlinson (who passed away on Jan. 14), Jose Iguina; Row Two: Marianne Gammache, Shelly Charles, Jody Croft, Rene Munoz, Matt Harlan, Herbert Grad, Patricia Salvadia, Megan Kauffman, Teresa Scott; Row Three: G. Steven Marley, Wakgari Baja, Manuel Gerovasilis, Scott Maser, Mike Ribbecca, Greg Petruno, Francisco Feliciano Jr., Troy Berry.

## Policy Conference: The Middle Class in a Global Economy

The Civic and Community Engagement and Research Project (CCERP) of Millersville University will host a two-day conference on campus titled "Sustaining an American Middle Class in a Global Economy."



David Sanger

The conference is scheduled for Friday, March 13, and Saturday, March 14.

The keynote speaker will be David Sanger, senior White House correspondent for The New York Times, who will focus on America's place in the global economy. Sanger is the author of the recently released book, "The Inheritance: The World Obama Confronts and the Challenges to American Power."

Other topics to be discussed at the conference are: redefining the "middle class" for the 21st century, fundamentals of the global economy, job growth and regulation and corporate responsibility.

Those interested in attending must register by contacting the CCERP office at ext. 3049 or online at [www.millersville.edu/~ccerp](http://www.millersville.edu/~ccerp).

## It's Time for Daffodils

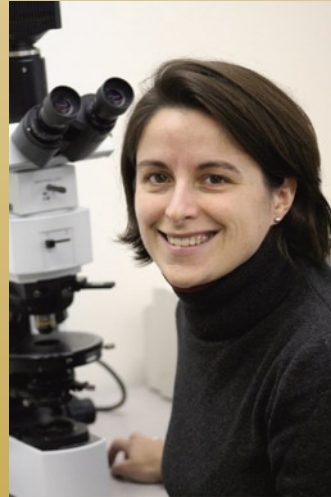


The Millersville University Business Associates (MUBA) will sponsor the American Cancer Society's 2009 "Daffodil Days"

on campus. Faculty and staff who would like to participate can place orders through any MUBA member or by contacting Anna Stauffer at [astauffer@millersville.edu](mailto:astauffer@millersville.edu) or ext. 3041. Order deadline date is February 23. Campus pick-up in purchasing is Wed., March 18. Items available are bunches of 10 daffodils @ \$10/ea., 2009 Vases of Hope @ \$15/ea., Boyd's Bears and a bunch @ \$25/ea., and pots of mini-daffodils @ \$12/ea.

## Rediscover Millersville: The 2010 Self-Study

Dr. Lynn Marquez, geology, is chairing a Middle State group whose goal is to study general education. This is the first time Marquez has worked on a Middle States group. Together with seven group members, Marquez explained, "My group is charged with reviewing the general education program—both the reform process as well as the new program. We are primarily interested in how faculty and students alike learn about general education and how the University climate and culture help to achieve the goals of general education."



Dr. Lynn Marquez

The group began meeting last spring and "identified questions that could help address the fundamental elements of Middle States. At the beginning of the semester, we studied our questions and devised ways to answer those questions. In essence, we came up with a research plan. We collected data, analyzed the results and wrote up the reports."

The accreditation process for Millersville is a multifaceted process and includes an extensive self-

study procedure to satisfy the regional accreditor, Middle States Commission for Higher Education (MSCHE). Information gathered helps the University understand its compliance with the 14 standards set by MSCHE.

"It has been a challenge, but a great way to learn more about Millersville University," said Marquez. "I have always been involved with our general education program, but this process has

really forced me to think about how we attempt to communicate and accomplish our goals. I certainly have been thinking very hard about my own classes and how I might better emphasize the nature of science and its importance to society."

The theme for the self-study is, "Rediscover Millersville: The 2010 Self-Study." The process will culminate in an accreditation team being on campus in spring 2010. MSCHE formally reaffirms accreditation every 10 years.

## New Employees October 2008



Front Row: Stephen Anspacher, Jonathan Driscoll, Roland Antes, Brandon Rockey, Corey Teaman; Row Two: Alicia Rodriguez-Fernandez, Kimberley Snyder, Lina Ospina; Third Row: Aaron Parise, Danielle Rapp, Linda Roush, Gemma Laspada, Joan Hower, Carmen Washington, Jerry Bachman, Pam Funk; Fourth Row: William Smith, Marilyn Cogansparger, Edwin Stokes, Elizabeth Anger, Pam Porterfield, Patricia Ressel, Anthony Floyd.

# Who Makes Millersville Special?

This edition of the Exchange features Philip Benoit, an English professor at Millersville University. Benoit has been working at Millersville since fall of 2007, when he covered courses for the late Dr. Jane Alden.

Q- What got you into journalism?

A- I have a background in public relations, having worked for many years at several colleges in communications jobs. In my early career I worked as a news director for a couple of radio stations and as an Army officer, I ran military broadcast outlets in Germany and Vietnam. I've also done freelance writing and media consulting and I've had opinion pieces published in the New York Times and other newspapers.

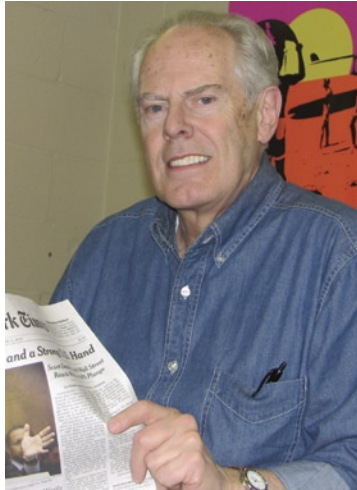
Before becoming a college administrator, I taught broadcast communications for a decade.

Q- Where else have you taught?

A- I taught broadcast communications at The State University of New York at Oswego for nine years. One of my students there was Al Roker. As an outgrowth of my teaching there, I became the co-author of four communications textbooks. One of them—Modern Radio Production—has become a standard textbook in radio production courses in many colleges and universities. It's about to come out in its eighth edition.

Q- What is your favorite thing about teaching at Millersville?

A- Most any professor will tell you that her or his favorite part of teaching is working with students. I'm no exception. As an adjunct, I'm not trying to advance in an academic career or gain tenure, or become a renowned scholar. And I'm not in it for the money (there isn't much), so if I didn't



Philip Benoit

enjoy the challenge of helping students gain an appreciation for and proficiency in journalism, I wouldn't do it. I'd spend my time riding my motorcycle instead.

Q- What has been the most exciting thing about your teaching career thus far?

A- I'd have to go with a trip we took last spring with a group of journalism students and faculty to New York City, where we visited CBS 60 Minutes and the New York Times. A couple of my old PR media contacts were kind enough to host us, and we got to meet with Lesley Stahl and Don Hewitt, both legendary figures at CBS. I was very proud of our students for the great questions they asked.

Q- Name one thing that intrigues you about journalism.

A- Journalism is indispensable in our democratic society. By providing us with information we need to function as citizens, and acting as a watchdog over the powerful individuals and institutions in our society, journalists play a crucial role in keeping our society on course as a democracy. The shifts we're currently experiencing in the kinds of media that deliver news, and the impact of this changing media landscape on how well journalism does its job are fascinating, and to a certain extent frightening. There is a lot riding on how all this plays out. And it's up to us as news consumers to make sure that the news media stay on track as guardians of our freedom.

Q- Where did you go to school?

A- I have a bachelor's degree with a major in religion from St. Lawrence University, an

upstate New York liberal arts college. And I have a master's in English literature from the State University of New York at Oswego. I took some additional graduate courses in media and journalism at Syracuse University.

Q- What was your first job?

A- After the Army, my first job was as news director at WRVO-FM, an NPR affiliated radio station in Oswego, N.Y.

Q- What job did you want to pursue as a kid?

A- I always wanted to be a radio announcer. TV wasn't invented then, or I might have wanted to be Walter Cronkite. Actually it was invented, but not many people had TV sets when I was really young.

Q- What is your favorite thing about teaching?

A- I figure that most of my students will learn something in my classes, but that maybe just one or two students in a decade may actually be exposed to something in one of my classes that they never thought about before. And that can lead to one of those "eureka" moments that can actually change her or his life in a fundamental way and lead to a career path or a way of looking at the world that would not have happened otherwise. That's what I like the most about teaching.

Q- What do you do in your spare time?

A- Last summer I got back into riding a motorcycle for the first time in about 25 years. I enjoyed it a lot back then, but gave it up when my daughters were growing up. Now that I'm more expendable, I feel like I can go ahead and risk my neck again.

Q- What is your favorite place in the United States?

A- The Adirondack Mountains in New York State.

Q- Have you ever traveled outside of the country? If so, where?

A- I've traveled to Germany, England, France, Canada, Mexico and Vietnam. The place I would most like to go back to is Vietnam. It's a beautiful country, and it would be nice to see it without knowing that some of its citizens were out to kill me.

## Travel Programs Destinations

For more information call ext. 2308 or email: [specialevents@millersville.edu](mailto:specialevents@millersville.edu)

- March 1 - Philadelphia Flower Show
- Apr. 4 - N.Y.C. "In the Heights" and "Shrek"
- Apr. 25 - N.Y.C. "Billy Elliot"
- Sept. 5 - U.S. Open

## Alumni & Friends

State System

Reservations/info available at ext. 3352. Or visit: [www.alumnivacations.com](http://www.alumnivacations.com), click on Millersville.

- Windmills/Tulips River Cruise Apr. 7-17
- Gems of the Baltic Cruise Jul. 11-23
- Bermuda Cruise Aug. 9-16
- Iceland/Newfoundland Sept. 19-30

*For Sale* - 3 br 2 ba energy-efficient home near Sam Lewis State Park outside Wrightsville. 20 min. commute to MU through farmland. \$180,000. Sy Brandon 252-3385