

Exchange  
November 17, 2011

## **Marauders, Hawks Meet For First Time in NCAA Quarterfinals**

### NCAA QUARTERFINALS INFORMATION

Rockhurst Hawks (17-2-2) vs. Millersville Marauders (14-6-1)  
Saturday, Nov. 19, 2011 – 6 p.m.  
Chryst Field at Biemsderfer Stadium – Millersville, Pa.

### TICKET INFORMATION

Purchase at Gate  
Adults: \$6  
Students with Valid ID/Senior Citizens: \$4  
Children, ages 2-12: \$1  
Millersville Students with Valid ID: FREE



The Midwest Region's top-seeded Rockhurst Hawks defeated second-seeded and reigning national champion Northern Kentucky Norse by a score of 2-0 on Sunday, Nov. 13 to advance to the NCAA Quarterfinals. The win was No. 600 for Rockhurst's head coach Tony Tocco, who became the third men's college coach to reach 600 or more career victories. The Hawks improved to 17-2-2 on the season and have not lost a game since Sept. 18 when they fell to Northern Kentucky, 1-0.

Millersville faced the tough challenge of beating the same team three times in a season in the Atlantic Regional Championship. The Marauders did just that by shutting out California (Pa.) for the third time this season by a score of 1-0 to advance to the NCAA Quarterfinals. The Marauders are hosting the NCAA Quarterfinals for the second time in four years. In 2008, Millersville fell to Northern Kentucky who advanced 5-4 in penalty kicks (game is recorded as a 1-1 tie).

Millersville and Rockhurst are meeting for the first time. Rockhurst entered the NCAA Tournament ranked No. 6, while Millersville came in at No. 21.

## **Will We Be Walking in a Millersville Winter Wonderland?**

*Sung to the tune of Winter Wonderland:*

Sleigh bells rang, were you listening? On George St., when snow was glistening!

Was Homecoming weekend a sample of the upcoming winter season? Eric Horst, director of Millersville University's Weather Information Center (MUWIC), gives his predictions for the approaching season.

The highly anticipated homecoming parade, which celebrated the 250th anniversary of the Millersville Borough, still went on as scheduled—snow and all. The day's snowfall accumulated to more than four inches, and the Millersville area hit low temperatures of 30 degrees, setting a record snowfall for the month of October.

Exchange  
November 17, 2011

“Although it snowed on Saturday, I do not expect an unusually cold or snowy winter,” says Horst. “Global climate signals, like the ongoing La Nina in the Pacific and current jet stream patterns, suggest a rather typical winter with near-average snowfall in the Millersville area.”

Horst predicts Millersville a highly variable winter, with multiple changeover storms (snow to ice to rain) and an average snowfall ranging from 20 to 30 inches and “La Nina tends to shift the storm track to our north, so that makes ‘changeover storms’ more likely than all-snow storms,” said Horst.



He also suspects there will be some warm spells causing temperatures to hit 50 degrees in the middle of winter. “I think there will be some days this winter where we will see students walking around in shorts,” exclaimed Horst.

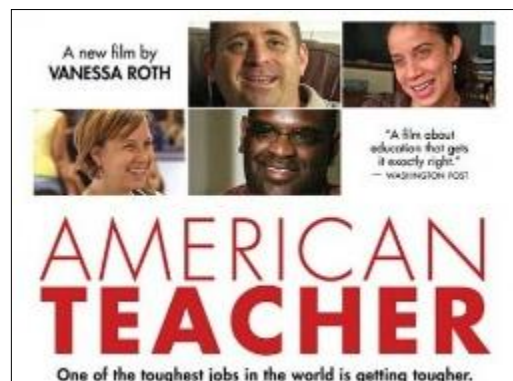
With no expectations of weather-related closings for the University, Horst says delays may be possible. “These changeover storms can make travel especially slippery, compared with just plain rain or all snow on the road.”

To get the latest weather updates, visit the MUWIC website at [www.atmos.millersville.edu/~wic/](http://www.atmos.millersville.edu/~wic/). For the latest information on weather delays and closings, sign up to receive MUAAlerts at [mualert.millersville.edu/](http://mualert.millersville.edu/).

## MU Professor Advocates for Teachers

Millersville University professor Dr. Tim Mahoney, educational foundations, is standing up for teachers across America and invites the public to do the same. He will be hosting the documentary “American Teacher” and a panel discussion at The Ware Center, Millersville University Lancaster, on November 22 from 4-7 p.m.

“The movie ‘American Teacher’ is an effort to create an alternative to ‘Waiting for Superman,’ a documentary on education that was not too kind to teachers and got lots of national attention,” said Mahoney. “This is a story about four teachers and makes the argument that what is not working in education has less to do with teachers and more to do with the policies that the people from Superman were trying to champion.”



The film is part of “The Teacher Salary Project,” comprised of a documentary film, “American Teacher,” an interactive online resource and a national outreach campaign that looks into the core of our educational crisis as seen through the eyes and experiences of teachers. The project

Exchange  
November 17, 2011

will bring awareness to the educational system and the effect it has on how children learn and their future.

Mahoney will be holding a panel discussion with teachers, administrators and students after the film to inspire action on behalf of teachers to advocate for their profession.

The film and discussion are free and open to the public. The screening is co-sponsored by the Student Pennsylvania State Education Association. For more information on the event, contact Mahoney at 717-871-7202 or [Timothy.Mahoney@millersville.edu](mailto:Timothy.Mahoney@millersville.edu).

### **Frerichs Receives State-Wide Award**

Dr. Richard Frerichs, of Millersville, was recently awarded with a Master School Board accreditation by the Pennsylvania School Boards Association (PSBA). Frerichs is an advertising and sponsorship consultant working with the Office of University Communications and Marketing. He also serves as the president of the board of the Penn Manor School District.



This accreditation applies to school boards and individual members across the state who have demonstrated exceptional accomplishments in achieving goals by meeting the needs of the students in the 21<sup>st</sup> century. This is the fourth year that PSBA has awarded this accreditation to members.

“I was honored when I was notified that I had received the award. Being one of the five statewide recipients this year was a humbling experience. Especially when you consider that there are 4,500 school board members in Pennsylvania. It was an honor to be recognized for my commitment,” said Frerichs.

The winners were announced at the PSBA School Leadership Conference in Hershey, held in October. This is the joint annual conference with the Pennsylvania Association of School Administrators (PASA) and the Pennsylvania School Boards Association.

### **Millersville “Sheds Light” on Canada Goose Problem**

More than three dozen Canada geese call Millersville University their home, but are also interfering with the well-being of the students and faculty on campus. Canada Goose Management, a company that specializes in controlling these animals, will soon be using hazing techniques in the middle of the night to maintain no-tolerance zones.

Millersville provides an excellent habitat for the geese; however, these animals present a danger to individuals walking near the site. Employees, students and visitors are at risk while they walk on campus, due to the fecal matter that is present on walk surfaces and pond water. This fecal

Exchange  
November 17, 2011

matter exists through direct and indirect contact, which can easily be carried into academic facilities and vehicles from foot traffic.

Exposure can lead to zoonotic diseases, which are caused by infectious agents that can be transmitted between animals and humans, and the transference parasite transfer. In addition, the geese can become aggressive to those that come too close to their nest space and goslings.



The objective of the hazing technique is to keep new geese from habituating and imprinting to the site. This work requires the feet of these animals to remain on the ground, while using lights and lasers to eliminate the negative impact the geese are having on the property. These lights will frighten the geese and force them to relocate and will not cause harm. This process will be completed in the middle of the night.

Currently, the University is within a one-year trial period to determine if a resolution to this problem can be reached.

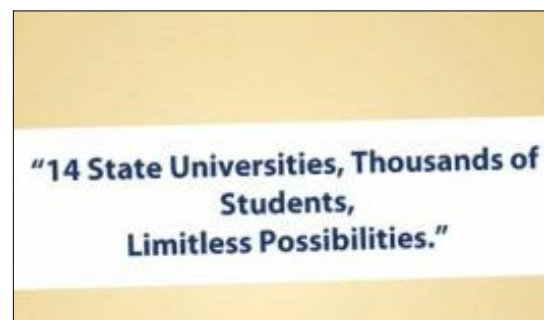
For more information, contact Lenny Aurand, director of housekeeping, grounds and moving, at [Lenny.Aurand@millersville.edu](mailto:Lenny.Aurand@millersville.edu).

## Student Business Plan Competition

Business sense and a good idea is any entrepreneur's recipe for success –\$10,000 doesn't hurt either.

Students at Millersville University are among the 312 students enrolled from Pennsylvania State System of Higher Education (PASSHE) universities who are interested in becoming entrepreneurs and creating new businesses through the first annual PASSHE Student Business Plan Competition. The winning students will be awarded a grand prize of \$10,000 to create their business.

Twenty-eight students and teams from Millersville are enrolled in the competition, well above the average per-PASSHE school participation.



“I am thrilled with the response by Millersville students and anticipate more opportunities in the near future for the Millersville University entrepreneurs,” said Victor Capece, assistant professor in the Department of Communication & Theatre and the competition coordinator at Millersville. Capece also serves on the competition's awards committee and its entrepreneur curriculum committee.

Exchange  
November 17, 2011

The students represent more than 50 academic majors, and attend Millersville, Bloomsburg, California, Cheyney, Clarion, East Stroudsburg, Edinboro, Indiana, Kutztown, Lock Haven, Mansfield, Shippensburg, Slippery Rock and West Chester universities. Of the 312 students participating, 46 percent are seniors, 19 percent juniors, 12 percent graduate students, 11 percent freshmen and 11 percent sophomores.

The PASSHE Business Plan Competition was launched during fall 2011 semester. A series of live online learning sessions focused on business plan writing are being presented by Robert Weber, senior fellow at the Wharton School of Business. The deadline to submit Business Plans is December 31, 2011.

The Student Business Plan Competition is made possible through the generous sponsorship of the Pennsylvania State Employees Credit Union (PSECU), Platinum Level Sponsor and J.P. Morgan, Bronze Level Sponsor. Additionally, the competition is supported by a Keystone Innovation Grant funded by the Pennsylvania Department of Community and Economic Development (DCED).

For more information on the competition and sponsorship opportunities, visit [passhebiz2011.org](http://passhebiz2011.org).

## MU Students Compete in Battle of the Brains

The Battle of the Brains was on for Millersville University students. University teams competed in the 36<sup>th</sup> annual IBM-sponsored Association for Computing Machinery International Collegiate Programming Contest (ACM-ICPC), in hopes of representing the University and winning the “World’s Smartest Trophy.”

The regional competition was held November 5 at Shippensburg University. Universities from the region participated in a round of problem solving to advance to the finals. Teams of three students applied their programming skills and mental endurance to solve complex, real-world problems.

Millersville University had six computer science majors competing in this year’s contest, on two teams, Millersville Black and Gold. The Millersville Gold team ranked 116<sup>th</sup> out of 164 teams and the Millersville Black team ranked 134<sup>th</sup> out of 164 teams.

Under the coaching of Todd Echterling, University system administrator, students included Daryl Boyer, Eric Shirk, Kevin Coyle, on Millersville Black, and Bob Hennessey, Michelle Huffman and Michael Palmer on Millersville Gold.

“For my first time going to a programming competition, I feel that it was a great experience and I had a great time,” said Huffman. “The five hours of programming and racking my brain went surprisingly fast.”



Exchange  
November 17, 2011

“Despite our low rankings, I am very proud of my students” said Echterling. “This year we had a lot of first time contestants on our teams and this contest can be very challenging to first timers. All of the students have already agreed to come back and compete at the Pennsylvania Association of Computer and Information Science Educators (PACISE) Contest that we will be hosting here in the spring. We look forward to continuing our practice so we are prepared for PACISE.”

“The competition was a lot of fun,” said Shirk. “The questions were difficult and thought provoking. I am looking forward to the competition in the spring.”

The top 100 teams from approximately 90 countries will travel to Warsaw, Poland, May 14-18, 2011 for the World Finals of the IBM-Sponsored ACM-ICPC. The top five teams this year included Duke University, College of William and Mary, Messiah College, University of Virginia and The Johns Hopkins University.

Results of this year’s Mid-Atlantic competition can be found at [midatl.radford.edu/docs/scoreboard.acm2011/summary.html](http://midatl.radford.edu/docs/scoreboard.acm2011/summary.html).

### **Need to Know: Introducing the PASSHE Academy**

Introducing the Pennsylvania State System of Higher Education (PASSHE) Academy – a new initiative designed to expand personal and professional development and wellness opportunities for all PASSHE employees. The Academy, designed by a cross-section of PASSHE employees over the past year, makes employee development programs offered at one university available to employees at all PASSHE universities.



By drawing heavily on programs delivered through electronic media, this initiative offers an efficient method for sharing resources, while accommodating busy schedules and different learning styles. Most of these programs are offered free of charge.

Upcoming programs, which are taught by staff training professionals, include:

- December 6: “Negaholics No More”
- December 8: “De-stressing the Holidays”
- December 13: “Reframing Success and Goal Setting”
- December 15: “Social Security Simplified”
- January 5: “What’s my Communication Style” – Millersville University
- January 12: “Making the Most of Change” – Millersville University

*\*Please note: Program types include facilitator led (face to face), webinar/video, teleseminar or e-zine (emails).*

For more information on these and other programs, visit the PASSHE Academy web and registration site at [www.passhe.edu/academy](http://www.passhe.edu/academy). Courses are available now and will be updated on an ongoing basis. Don’t miss out – sign up now!

Exchange  
November 17, 2011

An employee survey, which will be used to determine future programs, is also available. Click here to access the Training Needs Assessment Survey. For those who do not have computer access, hard copies of the survey will be available in the Human Resources office on campus.

For questions, contact Melanie DeSantis, campus contact, at [Melanie.Desantis@millersville.edu](mailto:Melanie.Desantis@millersville.edu), or email the Academy committee at [academy@passhe.edu](mailto:academy@passhe.edu).

## 11/17/2011 Activities

Here are the faculty and staff activities for November 17, 2011.



## New Employee Welcome



**Back Row (L-R):** Michael Maccarino, maintenance operations; Harvey Owen, The Ware Center; Mia Hall, athletics; Katherine Hendricks, student involvement and leadership; Patricia Wallech, music; Kenneth Slis, information resources.

**Front Row Seated (L-R):** Jim Shiffer, athletics; Char Domin, communications & marketing; Megan Staub, HR-student intern; Chris Adams, information resources; Michelle Perez, student affairs; Debbie

Lutz, payroll; Randi Howard, disaster research & education.

## Faculty and Staff Activities

**Dr. Cheryl Desmond**, educational foundations, presented a paper, “Arts and Cultural Education as Human Rights: El Salvador and United States Schooling,” at the annual meeting of the American Educational Studies Association, St. Louis, Missouri, November 3-8.

Exchange  
November 17, 2011

**Drs. Leroy Hopkins** and **Susanne Nimmrichter**, foreign languages, were recently involved with a multi-faceted project with the fall meeting of the Central Pennsylvania Chapter of the American Association of Teachers of German (AATG). Their exhibit on “The Civil Rights Struggle, African-American GIS and Germany” curated by Maria Höhn, is on view from now until December 13 at Franklin & Marshall College. With the exhibit there was also an oral history interview run by Höhn with three local African-American veterans. On November 5, Hopkins and Nimmrichter took part in the fall meeting with teachers to discuss multicultural Germany. Hopkins presentation was titled “Blacks in Germany? Why Should We Care?” He discussed the history of people of color in Germany from the Middle Ages to the present and how that information could be used to motivate American students of color to learn German.

**Dr. Lisa A. House**, counseling and human development, presented “Undergraduate and Graduate Student Coping with Stressful Experiences” at the Association of Counseling Center Faculty Fall Conference at Penn State University on October 27-28. In addition, House and **Dr. Kendra Saunders**, counseling and human development, conducted a teaching panel, “Dimensions of Identity,” at the PA-SSHE Women’s Consortium conference on November 4 at East Stroudsburg University.

**Dr. David “DJ” Johnson**, social work, is co-author of a new social welfare policy text with Diana M. DiNitto. *Essentials of Social Welfare: Politics and Public Policy* was released in mid-October. It represents a briefer and updated version of DiNitto's well-known social welfare policy text currently in its 7th edition, in which Johnson co-authored two chapters. The new text was introduced at the recent Council on Social Work Education Annual Program Meeting in Atlanta.

**Drs. Kendra Saunders** and **Dan O’Neill**, counseling and human development, presented “Self-Care as Mental Health Professionals: Helping to Maintain Quality Counseling” at the annual meeting of The Association of Counseling Center Faculty in State College, Pa., in October. In addition, Saunders co-authored two chapters in the book *Eating Disorders in Women and Children: Prevention, Stress Management and Treatment*. The book was released in November and the two chapters are titled “Body Image” and “Measures of Eating Disorder Symptoms and Body Image Disturbance.”

**Dr. John Wright**, applied engineering, safety & technology, recently served as an external reviewer for the 2012 American Society for Engineering Education Conference [Engineering Technology Division]. Wright reviewed proposals relating to automation and robotics.

## **Congratulations**

To **Emi Andino**, financial aid, who married Alex Alvarez on September 24 in Lancaster, Pa.

And to **Jayne Trogus**, wellness & women’s center, and her husband Mike, who had a baby boy, Rhys on October 19.

## Obituary

**Hugo Fiora**, 95, emeritus professor at Millersville died October 31. He had a 26-year teaching career in the Industrial Arts Department. Although he taught many courses, he was best known for his pottery classes and the ceramics laboratory that he developed for the University.

**Ruth G. Shoemaker**, 53, of Millersville, died November 3, following a courageous battle with cancer. She worked in the accounting office at Millersville for more than 19 years.

## Who Makes Millersville Special

This issue of the Exchange features Elaine Raffucci, director of migrant studies.

### **Q: What is the Pennsylvania Migrant Education Program?**

A: It is a federal program that offers educational support to migrant students and their families. These families need to fit the criteria of a migrant family, and if they are eligible, they receive services under Title 1, Part C. Our job is to make sure they are receiving the appropriate and equal opportunity as any student within the Commonwealth of Pennsylvania.



### **Q: How did you become involved in this initiative?**

A: As a newly arrived parent to Pennsylvania a few years ago, and former ESL educator in Rincón, Puerto Rico, I looked for work in the education field. I started as a part-time summer math and science teacher for the Lancaster County Migrant Education Program in 1995.

### **Q: Is this a state-wide program, or specific to Lancaster County?**

A: It is a national program, operated on a state level through the Pennsylvania Department of Education (PDE) in Harrisburg, and locally monitored in Region 3, which includes Millersville University. Region 3 covers Lehigh Valley and Northampton, Berks County and Lancaster County.

### **Q: How many languages are you fluent in?**

A: I am fluent in Spanish and English. I am bilingual and bicultural.

### **Q: What is the hardest age group of migrant students?**

A: As an educator, I feel secondary has more hardships. They come as teenagers, and teenagers have many changes at this stage and transitions, normally. Moving and learning another language just add to the dilemma. They need to adapt to a culture, social setting, language and academic performance that they may not be used to. They leave friends and loved ones behind and are confused on the reasons their parents move.

Exchange  
November 17, 2011

**Q: Have you visited any of the places these children come from?**

A: Yes. I have been to Mexico for a month and lived in Puerto Rico, as well as New York City.

**Q: Tell us about your community service.**

A: I am part of the Adelante Committee, After School Alliance and volunteer to help at my church. Besides working with school and health agencies to provide free health services for our students, I work on several committees at PDE to provide appropriate support for the families and students of the program.

**Q: What is your ultimate goal in life?**

A: It is to see more migrant students graduate from high school and achieve their academic goals; to become that grain of salt to make it happen and make a difference in a child's life.

**Q: Tell us about the CAMP program.**

A: The College Assistant Migrant Program (CAMP) is a grant that Penn State was awarded from the Office of Migrant Education in Washington, D.C. Our first priority is to send students there based on the scholarship they will be awarded according to family income, migrant criteria or eligibility and accordance to the criteria of Penn State. Although we use this as an initial vehicle, our local students prefer to stay close to home and go to schools that are more affordable, ruling out room and board and making mom and dad happy with their commuting.

**Q: Who is considered a migrant?**

A: A student or family member, who is mobile crossing state or school districts' guidelines, works in agriculture and has academic gaps in their education.

**Q: You must have to work closely with several school boards through your programming. Have you done any teaching yourself?**

A: We keep up with the decisions and regulations of the districts where our students participate. Yes, I have taught for five years ESL in math and science in Rincón, Puerto Rico. I have worked in secondary and elementary levels.

**Q: Are most of the services provided by the Migrant Studies program provided during the school year or through afterschool and summer programs?**

A: We work in the regular school year as well as in the summer. We have special projects, afterschool programs when and where necessary, that may run on weekdays or Saturdays and very intense summer programs, which last five weeks.

**Q: What's your favorite dance or dance move?**

A: I love to dance "Salsa."

**Q: Do you have a favorite day of the year?**

A: I'm not sure I can give it a day, but I like the transitions of the seasons. I love the fall time of the year and spring; those few days of transition that there is physical change and transition of energy of the earth. This change expresses a new beginning, which indicates is about to happen. I believe change is wonderful, beautiful and enlightening.

Exchange  
November 17, 2011

**Q: Where are you originally from?**

A: I was born and raised, to some extent, in Brooklyn, New York. I lived there for 12 years then went to Puerto Rico for twenty-something years, and returned to Pennsylvania in 1994.

**Q: What is your favorite food?**

A: Love Italian food.

**Q: If you could go anywhere in the world that you have not been before, where would you go?**

A: Italy. I want to be emerged into the culture. I believe it is vibrant, colorful and similar to the Spanish dialect. I want to learn their cooking methods, language and culture.