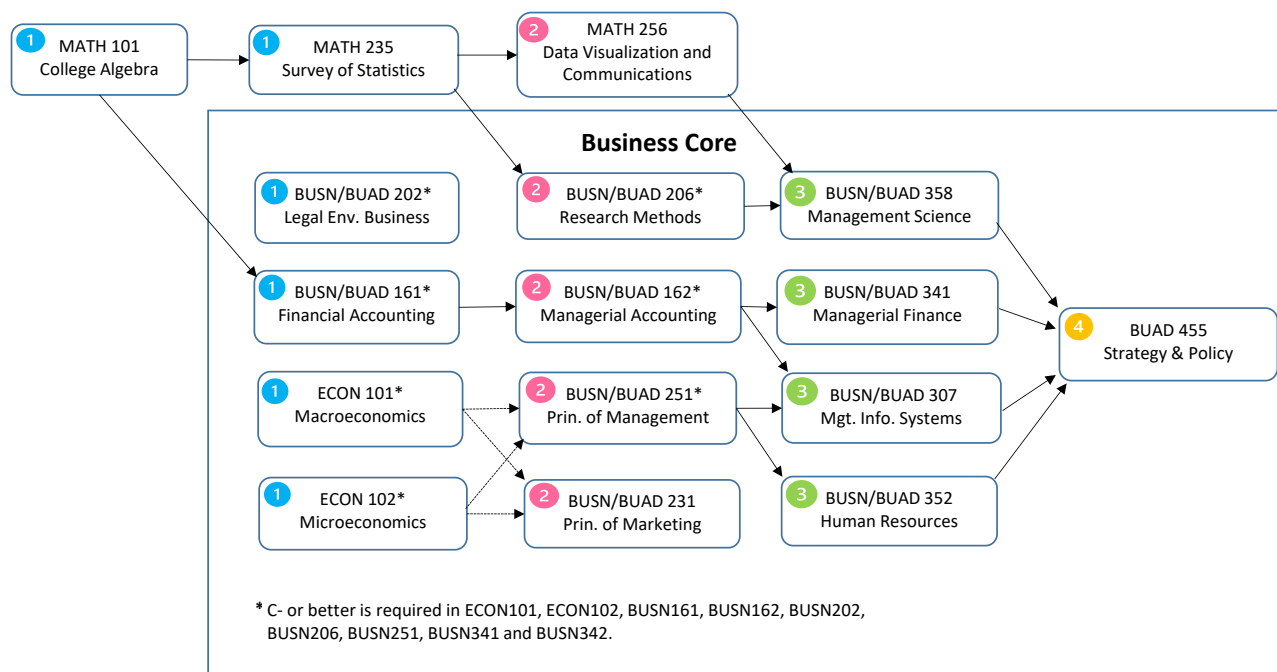


BS Finance Curriculum Flowchart



Business core prerequisites:

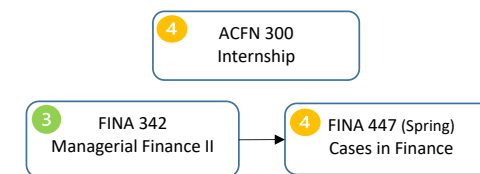
BUSN161 - MATH101 or 235MPT
 BUSN162 - BUSN161*
 BUSN206 - MATH235
 BUSN231 - Recommended ECON101*, ECON102*
 BUSN251 - Recommended - ECON101*, ECON102*

BUSN358 - MATH235, BUSN206
 BUSN341 - ECON102*, BUSN161*, BUSN162*
 BUSN352 - BUSN251*
 BUSN307 - BUSN251*, BUSN162*
 BUSN455 - BUSN307, BUSN341, BUSN352, BUSN358

- 1 These classes are typically taken during the freshman year.
- 2 These classes are typically taken during the sophomore year.

- 3 These classes are typically taken during the junior year.
- 4 These classes are typically taken during the senior year.

Upper-level major courses



- 3 **Five Finance electives:**
- 4 FINA 343 - Real Estate Fundamental. (Fall)
 - 4 FINA 344 - International Finance (Spring)
 - FINA 345 - Investments (Fall)
 - FINA 346 - Principles of Bank Management (Infrequent)
 - FINA 347 - Risk and Insurance (Spring)
 - FINA 445 - Financial Markets (Infrequent)
 - FINA 405 - Spread Sheet Modeling (Fall)
 - FINA 422 - Behavior Finance (Fall)

- 4 **Two departmental electives or a completed minor.**
 Additional finance or accounting classes are recommended.

Finance course prerequisites:

FINA 342 - BUSN341*, BUSN206*
 FINA 343 - BUSN341*
 FINA 344 - BUSN341*
 FINA 345 - BUSN341*
 FINA 346 - BUSN341*
 FINA 347 - BUSN341*
 FINA 405 - BUSN341*
 FINA 445 - BUSN341*
 FINA 447 - BUSN342*