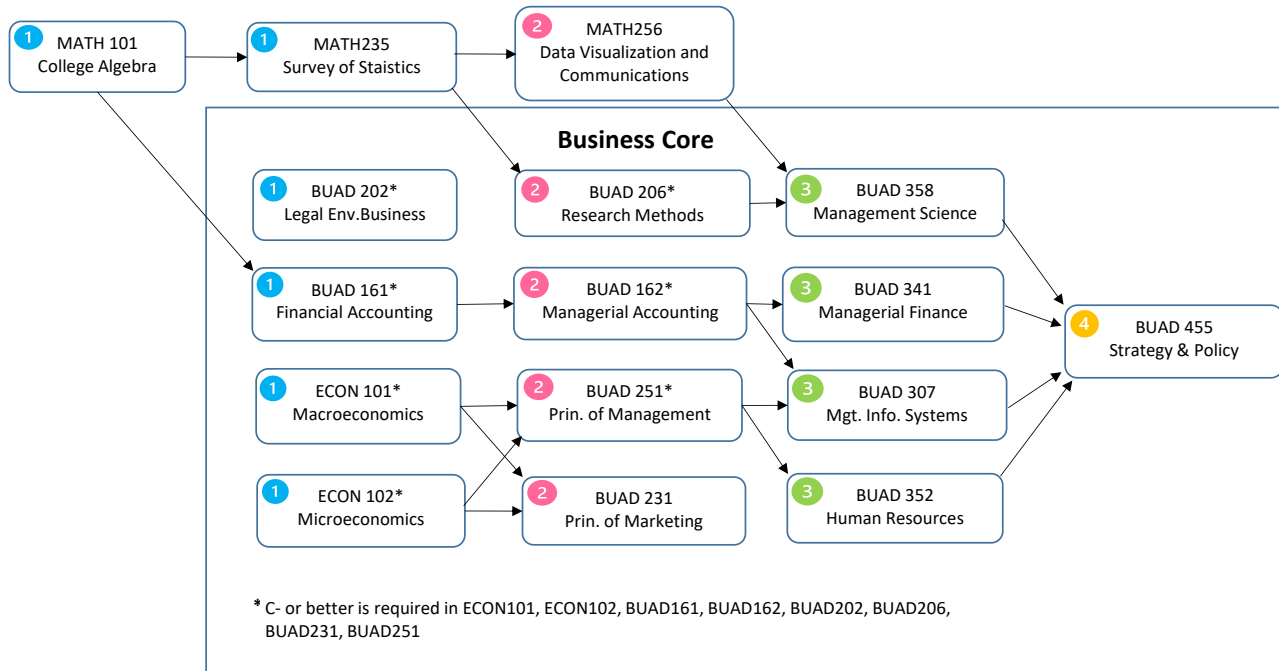


BS Business Administration (International Option) Curriculum Flowchart



Business Core Prerequisites:

BUAD161 - MATH101 or 151MPT
 BUAD162 - BUAD161*
 BUAD206 - MATH151, MATH235
 BUAD231 - ECON101*, ECON102*
 BUAD251 - ECON101*, ECON102*

BUAD358 - MATH151, MATH235, BUAD206
 BUAD341 - ECON102*, BUAD161*, BUAD162*
 BUAD352 - BUAD251*
 BUAD307 - BUAD251*, BUAD162*
 BUAD455 - BUAD307, BUAD341, BUAD352, BUAD358

- 1 These classes are typically taken during the freshman year.
- 2 These classes are typically taken during the sophomore year.

- 3 These classes are typically taken during the junior year.
- 4 These classes are typically taken during the senior year.

Upper-level major courses

3 INTB321
Intro. to Intl. Business

Three of the following four International Electives:

- 3 ECON325 - International Economics (Spring)
- 4 FIN344 - International Finance (Spring)
- 4 MGMT357 - International Management (Fall, Spring, Summer)
- 4 MKTG435 - International Marketing (Fall, Spring, Summer)

One of the following Courses:

ANTH121 Cultural Anthropology,
 GOVT251 International Relations,
 GOVT351 International Law,
 GEOG222 Economic Geography,

3 **Three Departmental Electives:**

4 **Can include up to six internship/CO-OP credits, and is waived with a completed minor.**