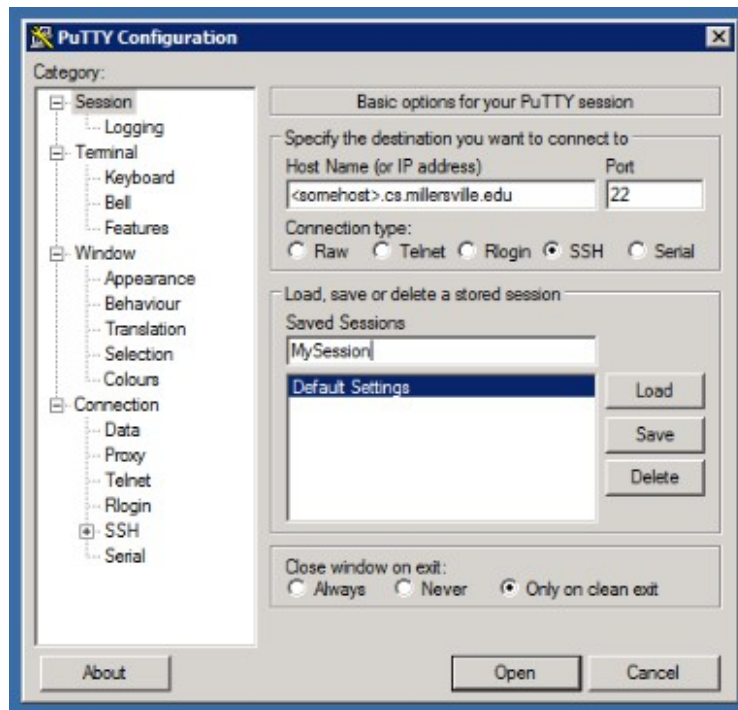


Using PuTTY

- Obtain PuTTY from: <http://www.chiark.greenend.org.uk/~sgtatham/putty/>
- Open the PuTTY software by double-clicking on the PuTTY icon.



- When PuTTY starts it will open with the PuTTY Configuration Screen.
- Create a new session; enter the hostnames of a workstation listed here:
<https://www.millersville.edu/computerscience/computer-labs/linux-lab.php>
- Connection Type: SSH
- Create name for Saved Session, and click the [Save] button.
- Double Click on the session name in the session list.



- Accept the encryption key (occurs on first connection and if keys change).



- Enter <username> and <password> as you would in the lab.



For more information on PuTTY, see the online documentation:

<http://the.earth.li/~sgtatham/putty/0.63/htmldoc/Chapter2.html#gs>