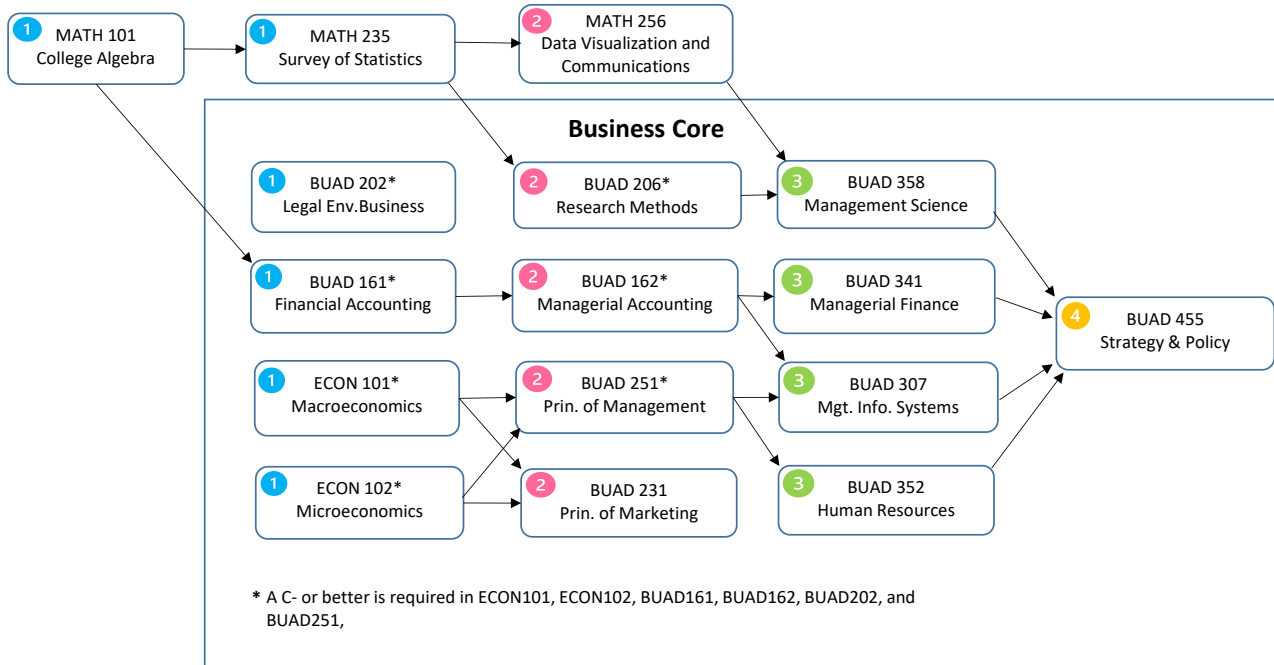


BS Management Curriculum Flowchart



Upper-level major courses



- 3 Three Management Electives and a Seminar (BUAD488B):**
- 4 MGMT351 - Organizational Theory
 - 4 MGMT353 - Labor-Management Relations
 - 4 MGMT354 - Compensation Management
 - 4 MGMT356 - Entrepreneurial Management
 - 4 MGMT371 - Principles of Entrepreneurship
 - 4 MGMT372 - Organizational Behavior
 - 4 MGMT373 - Management Skills
 - 4 MGMT374 - Leadership
 - 4 MGMT375 - Business Web Development
 - 4 MGMT381 - Data Information Management
 - 4 MGMT405 - Hospitality Management
 - 4 MGMT453 - Supply Chain & Logistics Management

- 4 Two Departmental Electives or a completed minor.**

Business Core Prerequisites:

BUAD161 - MATH101 or 235MPT
 BUAD162 - BUAD161*
 BUAD206 - MATH235
 BUAD231 - ECON101*, ECON102*
 BUAD251 - ECON101*, ECON102*

BUAD358 - MATH235, BUAD206
 BUAD341 - ECON102*, BUAD161*, BUAD162*
 BUAD352 - BUAD251*
 BUAD307 - BUAD251*, BUAD162*
 BUAD455 - BUAD307, BUAD341, BUAD352, BUAD358

Management Course Prerequisites:

MGMT351 - BUAD251*
 MGMT353 - BUAD251*
 MGMT354 - BUAD352
 MGMT355 - BUAD251*
 MGMT356 - BUAD251*, BUAD231*
 MGMT357 - BUAD251*
 MGMT372 - BUAD251*
 MGMT373 - BUAD251*
 MGMT374 - BUAD251*
 MGMT375 - BUAD307*
 MGMT381 - BUAD307*
 BUAD452 - BUAD251*, MATH235
 BUAD453 - BUAD251*, BUAD231*

- 1 These classes are typically taken during the freshman year.
- 2 These classes are typically taken during the sophomore year.

- 3 These classes are typically taken during the junior year.
- 4 These classes are typically taken during the senior year.