

Online Language and Literacy Program



The Department of Early, Middle and Exceptional Education offers a Master's in Education in Language and Literacy Education in which students choose one of two concentrations: a literacy concentration leading to reading specialist certification or an ESL concentration leading to ESL certification. Both concentrations are available for elementary and secondary teachers who possess an Instructional Certificate in Pennsylvania. A Master of Education in Language and Literacy Education offers the student the opportunity to participate in original research and experiential programs in this field.

DEGREES/CONCENTRATIONS

M.ED. IN LANGUAGE AND LITERACY READING SPECIALIST CERTIFICATION

33-credit program

The reading specialist concentration explores foundations of reading and writing, disabilities, and teaching methods. Students complement their studies with a literacy elective of their choice and have the option to pursue a research thesis.

M.ED. IN LANGUAGE AND LITERACY ESL SPECIALIST CERTIFICATION

33-credit program

The English as a Second Language (ESL) concentration encourages students to study and practice second language acquisition, linguistic diversity and language interventions through a clinical practicum. Students concurrently study literature, linguistics and other multicultural aspects.

READING SPECIALIST CERTIFICATION

27-credit program

Millersville University is an approved provider of a Reading Specialist Certification. Persons who have a valid Pennsylvania Instructional I or Instructional II certificate and have enrolled in and completed the Millersville University reading specialist courses are eligible to receive reading specialist certification from the Pennsylvania Department of Education.

ESL SPECIALIST CERTIFICATION

18-credit program

Millersville University is an approved provider of an English as a Second Language Program Specialist certificate program. Persons who have a valid Pennsylvania Instructional I or Instructional II certificate and have enrolled in and completed the Millersville University ESL coursework are eligible to receive ESL add-on certification from the Pennsylvania Department of Education.

PROGRAM BENEFITS

- Flexible learning options with online courses available* (practicum may be in person depending on personal circumstances).
- Courses offered fall, winter, spring and summer.

CAREER OPPORTUNITIES

- Reading specialist
- Literacy coach
- English as a Second Language teacher
- International English teacher
- ESL tutor



PROGRAM CURRICULUM

M.Ed. READING SPECIALIST CONCENTRATION

Professional Core Requirement:

EDFN 601 Methods of Research (3)

Psychology Requirement (choose one):

PSYC 525 Advanced Developmental Psychology (3)

PSYC 526 Advanced Adolescent Psychology (3)

EDFN 545 Advanced Educational Psychology (3)

PSYC 625 Human Growth and Development (3)

Education Foundation Requirement (choose one):

EDFN 511 Comparative Education (3)

EDFN 590 Social Foundations of Education (3)

EDFN 603 Philosophy of Education (3)

EDFN 604 Education and Public Policy (3)

Reading Specialist Requirements

RDED 621 Foundations of Reading and Writing (3)

RDED 622 Reading and Writing in the Content Areas (3)

RDED 623 Diagnosis of Reading and Writing Disabilities:

A Practicum (3)

RDED 624 Diagnosis and Correction of Reading and

Writing Difficulties: Reading Clinic (6)

RDED 625 Psychological and Social Factors in Reading and

Writing Ability (3)

RDED 626 Literacy Leadership (3)

EDUC 562 Methods for Teaching English Language Learners (3)

EDUC 636 Literature and Response (3) *if a prior course in*

Children's Literature was completed

EDUC 535: Literature for Children and Young Adolescents (3)

if no prior course in Children's Literature was completed

Literacy elective approved by the graduate coordinator

(i.e., Summer Literacy Institute)

M.Ed. ESL CONCENTRATION

PROFESSIONAL CORE REQUIREMENTS

Education Core Requirement:

EDFN 601 Methods of Research (3)

Psychology Requirement (choose one):

PSYC 525 Advanced Developmental Psychology (3)

PSYC 526 Advanced Adolescent Psychology (3)

EDFN 545 Advanced Educational Psychology (3)

PSYC 625 Human Growth and Development (3)

Education Foundation Requirement (choose one):

EDFN 511 Comparative Education (3)

EDFN 590 Social Foundations of Education (3)

EDFN 603 Philosophy of Education (3)

EDFN 604 Education and Public Policy (3)

LANGUAGE & LITERACY REQUIREMENTS

Content Area Literacy Requirement

RDED 622 Reading and Writing in the Content Areas (3)

Language or Literature Requirement (choose one):

EDUC 535 Literature for Children & Young Adolescence (3)

If no prior course in Children's Literature

EDUC 636 Literature and Response (3)

If prior course in Children's Literature was taken

ENGL 661 Seminar in Transformational Linguistics (3)

ENGL 663 Applied Linguistics (3)

Structured Literacy Requirement

RDED 621 Foundations of Reading and Writing (3)

ESL REQUIREMENTS

EDUC 561 Second Language Acquisition: Theory, Programs and Assessment (3)

EDUC 562 Methods for Teaching English Language Learners (3)

EDUC 563 Linguistic and Cultural Diversity in the Classroom (3)

EDUC 564 Assessment, Policies and Practices in Teaching English

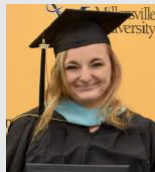
Language Learners (3)

EDUC 565 Language and Literacy Interventions: Clinical Practicum (6)

OUR GRADUATES



"The ESL Program Specialist Certification at Millersville University was an immersive, thought-provoking and comprehensive exploration and analysis of ESL instruction, with an emphasis on the state of Pennsylvania, for obvious reasons. The professors were exceptional and creative with their instructional approach, which generated a collaborative and intellectually stimulating atmosphere for advanced learning. It was one of the best graduate-level academic experiences of my educational career." ~ Miguel Antunes



"My time in the program brought me an extensive amount of knowledge regarding best practices for literacy with students in grades kindergarten through 12. As a first-grade teacher in the School District of Lancaster, I was able to utilize my graduate class content among my students and improve my current practices as a primary teacher. The classes were so relevant and helpful in increasing my knowledge about the best and current literacy practices. I was able to learn about curriculum, assessment and completed multiple diagnostic studies with a variety of students. Although I have not become a reading specialist, the degree I earned has been a huge help in providing me with extensive knowledge regarding diagnosing, assessing and supporting students within the pillars of literacy." ~ April Altrichter

PROGRAM COORDINATOR

Dr. Aileen Hower | Office: Stayer Hall, Room 225

Phone: 717-871-7341 | Email: Aileen.Hower@millersville.edu